



IFB 2020-02

Grounds & Landscaping Maintenance of City Owned Property

Pre-Bid Conference: October 2, 2019, 2:00 PM EST

Pre Bid Conference Questions

1. Q: Will you split the bids between several contractors?
A: We reserve the option to split the bid or award in whole.

2. Q: How do we submit references?
A: On a separate page with the bid form.

3. Q: Can our bid be uploaded to EVA?
A: No. It must be delivered or mailed.

4. Q: Should the bid be based on the rest of this current year and how does the renewal work if that is the case?
A: The bid should be based on an entire 12-month period.

5. Q: Is the grass area beside the Bogart pond to be included?
A: See attached map.

6. Q: Is the grass area at the Business Center to be included?
A: See attached map.

7. Q: If the selected contractor does not work out, will the award be given to the next lowest bidder?

A: No.

8. Q: Will the contractor be responsible for removing flowers in the cemetery?

A: Only the pieces or parts of flowers that have been scattered due to wind. Arrangements on spaces that have not been removed will be cut around.

9. Q: Can we spray fence lines or in the cemetery around headstones?

A: Approval has to be given before spraying. In no event should spraying occur around headstones.

10. Q: How long will it take to get approval for spraying?

A: Approval will be determined immediately upon request.

11. Q: Does the City supply a form for weekly verification of work?

A: No. It is the responsibility of the contractor to supply weekly reports of work performed.

12. Q: Why wasn't the landscaping separated from grass cutting at the buildings and parks?

A: It was placed together on purpose. This eliminates conflict between two different contractors working at the same locations.

13. Q: Does the City give preferential treatment for SWaM certified businesses?

A: All businesses, including minority and women-owned businesses are encouraged to respond to the IFB.

14. Q: Is this the first time the City has posted anything on EVA?

A: No.

15. Q: If we get to a property that is well maintained in the right of ways, do we skip it?

A: Yes.

16. Q: What do we do if we find damage to the right of ways while cutting them?

A: Report the damage to Public Works so they can schedule to make the repairs.

17. Q: What if the contractor wants the entire contract and not portions of it?

A: Make that clear on the bid form.

18. Q: Can we get a copy of the pre-bid sign in sheet?

A: It will be posted with the questions on EVA.

19. Q: Where do the right of ways end?

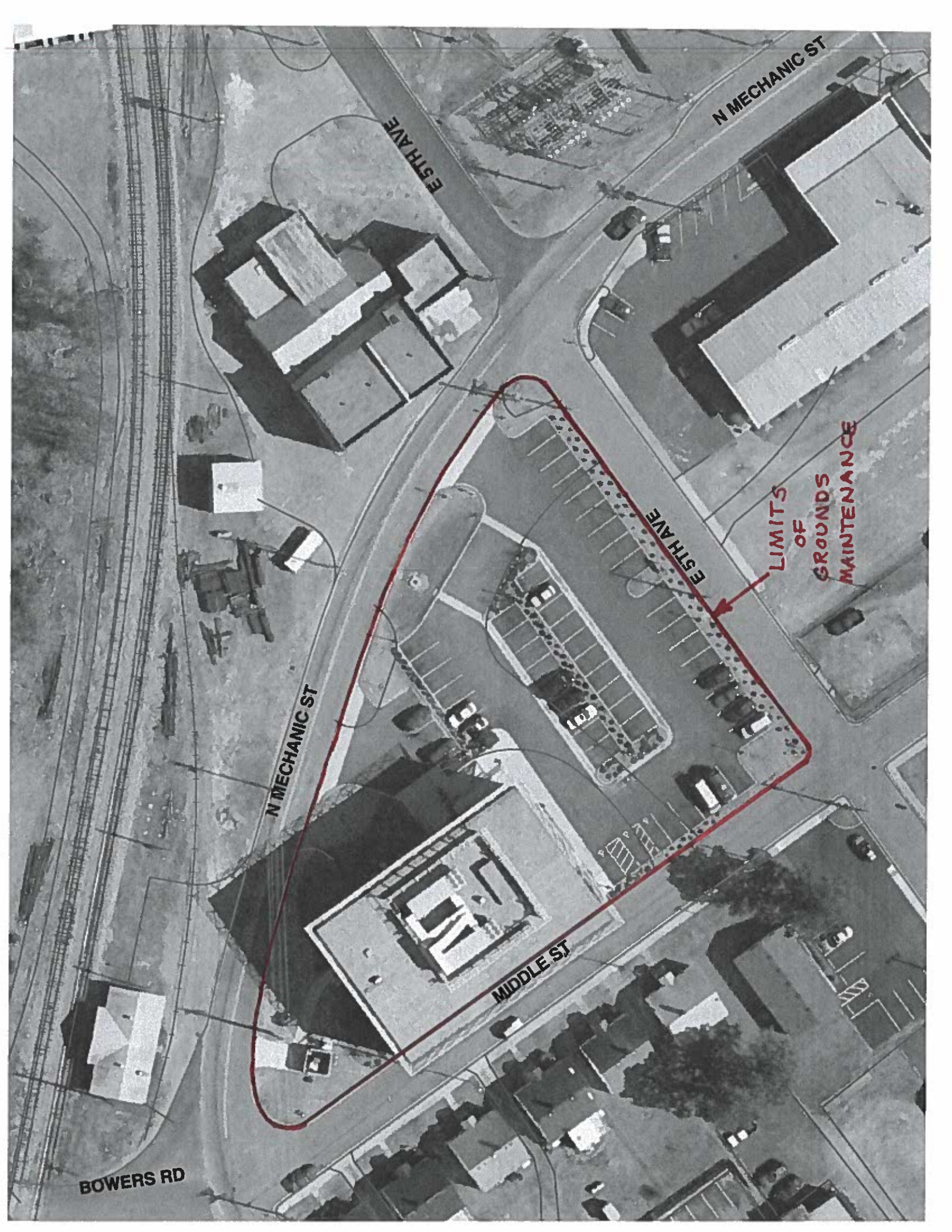
A: Generally, they end at the back of the sidewalk.

20. Q: Who empties the trash cans at the cemeteries?

A: The City is responsible for dumping the trash cans.

21. Q: Does the City provide a place to take the limbs and debris picked up when removed from the maintenance areas?

A: Yes, and at no charge to the contractor.



N MECHANIC ST

ESTH AVE

N MECHANIC ST

ESTH AVE

LIMITS OF
OF
GROUNDS
MAINTENANCE

MIDDLE ST

BOWERS RD



S MAIN ST

BEALE CT

S FRANKLIN ST

W BARRETT ST

LIMITS
OF
GROUNDS
MAINTENANCE

BOGART ST

S HIGH ST

W 1ST AVE