



**Franklin City Council Agenda
December 12, 2022
Council Chambers
207 West Second Avenue
Franklin, Virginia 23851**

6:00 P.M.

Reception in Honor of Mayor Frank M. Rabil

7:00 P.M.

Regular Meeting

CALL TO ORDER. MAYOR FRANK M. RABIL
PLEASE TURN OFF CELL PHONES. MAYOR FRANK M. RABIL
PLEDGE OF ALLEGIANCE
CITIZEN'S TIME
AMENDMENTS TO AGENDA

1. CONSENT AGENDA:

- A. Approval of November 28, 2022 minutes
- B. Resolution in Frank M. Rabil, Mayor 2022-30
- C. Resolution in Honor of Arbor Day 2022-31

2. FINANCIAL MATTERS

- A. Budget Amendment 2023-11
- B. Presentation of Tax Delinquencies
- C. Presentation of Tax Write Offs

3. OLD/ NEW BUSINESS:

- A. Time Capsule Request
- B. City Manager's Report

4. COUNCIL/STAFF REPORTS ON BOARDS/COMMISSIONS

5. CLOSED SESSION

I move that the City of Franklin, Virginia City Council adjourn into a closed meeting pursuant to Virginia Code Section 2.2-3711-A-1, 1. discussion of appointments to boards and commissions, and discussion of performance of employees of the public body to discuss the following subject or subjects: Industrial Development Authority, HRPDC Community Advisory Committee; and

2.2-3711-A-5, Discussion concerning a prospective business or industry or the expansion of an existing business or industry where no previous announcement has been made of the business' or industry's interest

in locating or expanding its facilities in the community specifically along Pretlow Industrial Park, Armory Drive, Downtown Franklin, and Franklin Regional Airport.

2.2-3711-A-7 briefings by staff regarding Southampton County Courthouse project delays.

Motion Upon Returning to Open Session- I move that the City of Franklin, Virginia City Council certify that, to the best of each member's knowledge, (i) only public business matters lawfully exempted from open meeting requirements by Virginia law were discussed in the closed meeting held on December 12, 2022; (ii) only such public business matters as were identified in the motion convening the closed meeting were heard, discussed or considered by the City of Franklin, Virginia City Council; and (iii) no action was taken in closed meeting regarding the items discussed.

6. ADJOURNMENT

Councilman Mark Kitchen	Aye
Vice Mayor Bobby Cutchins	Aye
Mayor Frank Rabil	Aye
Councilman Ray Smith	Aye
Councilman Gregory McLemore	Aye

Mayor Frank Rabil affirmed the motion carried unanimously.

B. Resolution in Honor of Sharon D. Mayes #2022-28 (read by Councilman Mark Kitchen)



**Resolution of Appreciation to
Sharon D. Mayes
Resolution 2022-28**

WHEREAS, The City of Franklin would like to recognize the retirement of Sharon D. Mayes, who has served the City of Franklin for twenty-three years; and

WHEREAS, Sharon D. Mayes served as a true representative for not only the citizens but her colleagues during her time of employment here at the City of Franklin; and

WHEREAS, Sharon D. Mayes throughout her career with the City of Franklin’s Power & Light Department has shown her dedication to the department and the City of Franklin; and

WHEREAS, Sharon D. Mayes has shown that she is able to take action and adapt to any situation on any given day; and

WHEREAS, during the times of numerous power outages and hurricanes, Sharon would keep the department running with her ability to manage the abundant phone calls with citizens and by keeping in constant communication over the radio with other members of the department; and

WHEREAS, Sharon D. Mayes has been the face and pillar of the City of Franklin’s Power & Light department, she is the first point of contact for citizens whenever there is a power and light issue.

WHEREAS, Sharon D. Mayes has maintained a high level of professionalism that has gained her great respect with staff and citizens; and

NOW, THEREFORE, BE IT RESOLVED, that the City of Franklin City Council honors the extraordinary service of Sharon D. Mayes.

AND, BE IT FURTHER RESOLVED, that a copy of this Resolution be spread upon the minutes of this meeting of the Franklin City Council as visible evidence of the high esteem in which this Council and the citizens of the City of Franklin hold Sharon D. Mayes, thereby forever preserving and recording its gratitude.

Signed this 28th day November 2022

Frank Rabil, Mayor
City of Franklin, Virginia

Mayor Frank Rabil entertained a motion to approve Resolution 2022-28 in Honor of Sharon D. Mayes. Councilwoman Wynndolyn Copeland made a motion to approve Resolution 2022-28 in Honor of Sharon D. Mayes with a second from Councilman Ray Smith.

The motion carried the vote 7-0

The vote was as follows:

Councilman Linwood Johnson	Aye
Councilwoman Wynndolyn Copeland	Aye
Councilman Mark Kitchen	Aye
Vice Mayor Bobby Cutchins	Aye
Mayor Frank Rabil	Aye
Councilman Ray Smith	Aye
Councilman Gregory McLemore	Aye

Mayor Frank Rabil affirmed the motion carried unanimously.

C. Resolution in Honor of Jeffery M. Noia #2022-29 (Read by Councilwoman Wynndolyn Copeland)



**Recognition of Appreciation to Jeffery M. Noia
Resolution 2022-29**

WHEREAS, The City of Franklin would like to recognize the retirement of Jeffrey M. Noia, who has served the City of Franklin for twenty-nine years; and

WHEREAS, Jeffrey M. Noia began his career with the City of Franklin’s Fire and Rescue Department as a Firefighter for nine-years, showing true testament to the department’s mission to save lives, protect property and educate the public; and

WHEREAS, Jeffrey M. Noia after dedicating his services to the City of Franklin’s Fire and Rescue Department, transitioned to the City of Franklin’s Public Works Department, as a Wastewater Operator for three years; and

WHEREAS, Jeffrey M. Noia gave outstanding service and dedication as the Water System Technician, was later promoted to the Lead Utility Operator, where he has been a committed leader for the last seventeen years; and

WHEREAS, Jeffrey M. Noia being responsible for safe drinking water for the residents of the City of Franklin and surrounding communities; and

WHEREAS, Jeffrey M. Noia has been steadfast in maintaining the operation and maintenance of the City’s water and sewer distribution systems; and

WHEREAS, Jeffrey M. Noia has on numerous occasions, found and implemented improvements to the daily City operations and functions; and

WHEREAS, throughout his tenure, with the highest of professionalism, assisted the residents of the City of Franklin with multiple grievances and work orders regarding water leaks and high usage; and

WHEREAS, during the times of numerous severe weather events, including major hurricanes, provided excellent assistance to the residents of the City of Franklin; and

NOW, THEREFORE, BE IT RESOLVED, that the City of Franklin City Council honors the exceptional service of Jeffrey M. Noia.

AND, BE IT FURTHER RESOLVED, that a copy of this Resolution be spread upon the minutes of this meeting of the Franklin City Council as visible evidence of the high esteem in which this Council and the citizens of the City of Franklin hold Jeffrey M. Noia, thereby forever preserving and recording its gratitude.

Signed this 28th day of November 2022

Frank Rabil, Mayor
City of Franklin, Virginia

Mayor Frank Rabil entertained a motion to approve Resolution 2022-29 in Honor of Jeffrey M. Noia. Councilman Mark Kitchen made a motion to approve Resolution 2022-29 in Honor of Jeffrey M. Noia 27 with a second from Councilman Linwood Johnson.

The motion carried the vote 7-0

The vote was as follows:

Councilman Linwood Johnson	Aye
Councilwoman Wynndolyn Copeland	Aye
Councilman Mark Kitchen	Aye
Vice Mayor Bobby Cutchins	Aye
Mayor Frank Rabil	Aye
Councilman Ray Smith	Aye
Councilman Gregory McLemore	Aye

Mayor Frank Rabil affirmed the motion carried unanimously.

Financial Matters:

- A. Budget Amendment 2023-10

Mayor Frank Rabil asked if there are any nominees the for the Franklin City Public School Ward 4 seat 3 times.

There were no nominations. Mayor Frank Rabil closed the Public Hearing.

City Manager Amanda Jarratt stated there will be an advertisement ran again.

B. Franklin Southampton Economic Development, Inc. Strategic Plan

City Manager Amanda Jarratt stated the staff at Franklin Southampton Economic Development, Inc. has been working on a Strategic Plan, Mr. Karl Heck will present those results.

Mr. Karl Heck, President and CEO, presented the mission statement is to diversity the economy, create high quality jobs and provide a future for the families and youth of Franklin and Southampton. The Strategic Plan process included consulting with Cindy Thomason, develop a stake holder survey with Southampton County Board of Supervisors, City of Franklin City Council, FSEDI Board of Directors, FSEDI staff. Follow-up action items include two citizen focus groups have been completed, an additional focus group that will be minority focused being planned for January, and staff reports progress to FSEDI Board quarterly.

Goal 1: diversify the economy

Goal 2: create a business friendly climate

Goal 3: foster local tourism

Goal 4: organizational excellence

Councilwoman Wynndolyn Copeland asked what some of the concerns from the focus groups were. Mr. Karl Heck stated people are positive about the community and the attractions.

No action required at this time.

C. City Managers Report

City Manager Amanda Jarratt stated that the Courthouse and the Armory projects are both underway. A preliminary call with Enteros will take place to start working on the calendar. We are waiting on the bid opening for the Armory. We were notified that the City was awarded an additional \$6,000 from a group in Richmond to support the project with DHCD, this will help cover additional cost as we are facing inflation on some of the water and sewer cost. Reminder of the joint public session with the Franklin City Public Schools Board on Thursday, December 8th at 6 pm located at S.P. Morton Elementary in the library. Social Services have the angel tree available from 8:30 am to 5:00 pm.

General Updates

- Staff continues to work on the various capital projects approved by City Council.
- Staff continues to work with DHCD and Summit Engineering on the Laurel Street CDBG Grant. Client intake and income verifications have begun.
- Staff continues to work with Michael Baker and the Department of Rail and Public Transit to get feedback from the public on potential fixed route transit options in the City.

- Staff continues to meet with regional partners to discuss next steps on the regional radio system as well as violence and crime prevention.

Community Events

- Holiday Parade December 2nd

No action at this time.

Council/Staff Reports on Boards/Commissions:

Councilman Linwood Johnsons stated that Western Tidewater Regional Jail Board meeting will be held this week. Mayor Frank Rabil stated there will be a HRTAP meeting this week, any information from that will be given.

Closed Session:

Councilman Mark Kitchen moved that the City of Franklin, Virginia City Council adjourn into a closed meeting pursuant to Virginia Code Section 2.2-3711-A-1, 1. Discussion of appointments to boards and commissions, and discussion of performance of employees of the public body to discuss the following subject or subjects: Industrial Development Authority, HRPDC Community Advisory Committee, Franklin Redevelopment and Housing Authority and

2.2-3711-A-5, discussion concerning a prospective business or industry or the expansion of an existing business or industry where no previous announcement has been made of the business’ or industry’s interest in locating or expanding its facilities in the community specifically along Pretlow Industrial Park, Armory Drive, Downtown Franklin, and Franklin Regional Airport.

2.2-3711-A-7, briefings by staff regarding Southampton County Courthouse project delays.

The motion was seconded by Councilman Linwood Johnson to go into Closed Session.

The motion carried the vote 7-0

The vote was as follows:

Councilman Linwood Johnson	Aye
Councilwoman Wynndolyn Copeland	Aye
Councilman Mark Kitchen	Aye
Vice Mayor Bobby Cutchins	Aye
Mayor Frank Rabil	Aye
Councilman Ray Smith	Aye
Councilman Gregory McLemore	Aye

Mayor Frank Rabil affirmed the motion carried unanimously.

Councilman Linwood Johnson made a motion to appoint Ms. Patricia Brown to the Franklin Redevelopment and Housing Authority Board, with a second from Councilwoman Wynndolyn Copeland.

The motion carried the vote 6-1-0

The vote was as follows:

Councilman Linwood Johnson	Aye
Councilwoman Wynndolyn Copeland	Aye
Councilman Mark Kitchen	Aye
Vice Mayor Bobby Cutchins	Aye
Mayor Frank Rabil	Aye
Councilman Ray Smith	Aye
Councilman Gregory McLemore	Abstained

Mayor Frank Rabil affirmed the motion carried.

Motion Upon Returning to Open Session

Councilman Mark Kitchen moved that the City of Franklin, Virginia City Council certify that, to the best of each member’s knowledge, (i) only public business matters lawfully exempted from open meeting requirements by Virginia law were discussed in the closed meeting held on November 28, 2022, (ii) only such public business matters as were identified in the motion convening the closed meeting were heard, discussed or considered by the City of Franklin, Virginia City Council; and (iii) no action was taken in closed meeting regarding the items discussed.

The motion was seconded by Council

The motion carried the vote 7-0

The vote was as follows:

Councilman Linwood Johnson	Aye
Councilwoman Wynndolyn Copeland	Aye
Councilman Mark Kitchen	Aye
Vice Mayor Bobby Cutchins	Aye
Mayor Frank Rabil	Aye
Councilman Ray Smith	Aye
Councilman Gregory McLemore	Aye

Mayor Frank Rabil affirmed the motion carried unanimously.

Adjournment

Councilman Ray Smith made a motion to adjourn the November 28, 2022 City Council meeting with a second from Councilman Mark Kitchen.

The motion carried the vote 7-0

The vote was as follows:

Councilman Linwood Johnson	Aye
Councilwoman Wynndolyn Copeland	Aye
Councilman Mark Kitchen	Aye
Vice Mayor Bobby Cutchins	Aye
Mayor Frank Rabil	Aye
Councilman Ray Smith	Aye
Councilman Gregory McLemore	Aye

Mayor Frank Rabil stated the meeting stands adjourn.

The November 28, 2022 City Council meeting was adjourned at 7:58 P.M.

Mayor

Clerk to City Council

City Council Work Session Meeting Minutes November 28, 2022

Call to order

The Franklin City Council held a Work Session with the Planning Commission on November 28, 2022 at 6:00 P.M. in the City Council Chambers located at 207 West Second Avenue, Franklin, Virginia 23851.

Council Members in Attendance: Frank Rabil, Mayor; Robert “Bobby” Cutchins, Vice-Mayor; Councilman Linwood Johnson; Councilwoman Wynndolyn Copeland; Councilman Mark Kitchen; Councilman Gregory McLemore; Councilman Ray Smith.

Council Members not in Attendance:

Staff in Attendance: Amanda Jarratt, City Manager; A’Risha Jones, Executive Assistant, recording minutes.

Other Staff in Attendance: Carlee Gurskiy, Director of Community Development; Beverly Walkup, Interim Director of Community Development; Robert Porti, Deputy Chief of Police; Vernie Francis, Chief of EMS.

Mayor Frank Rabil called the November 28, 2022 Work Session meeting to order at 6:00 P.M.

Planning Commission

City Manager Amanda Jarratt stated the work session is with the Planning Commission. As Council is aware the Planning Commission has been working with Ms. Beverly Walkup and Ms. Carlee Gurskiy on analyzing the residential districts in the City of Franklin over the last few months. In the Council packets are drafts of what the Planning Commission recommends, over time the zoning ordinances have been amended more than what it should have been for a City of our size. What the Planning Commission will be presenting are the recommendations to condense the residential zoning districts. There is no anticipated action required for this work session.

Speaker Ms. Beverly Walkup, gave details about the issue with the residential zoning districts to revise and consolidate districts based upon minimum lot area, frontage, and width and setback requirements. The Planning Commission directed staff to look at the current eight (8) residential zoning districts for revision and consolidation based upon existing and future development patterns. The first district considered was the R-O zoning district, adopted by City Council on October 25, 2021. Essentially, the consolidation of districts results into the following:

1. The R-O and the R-OA districts have been combined with the proposed changes reflected in the R-O district and elimination of the R-OA district.
2. The R-1 and R-1A districts have been combined with the proposed changes reflected in the R-1 district and elimination of the R-1A district.
3. The R-2 and R-1B and the R-UR districts have been combined for which the proposed changes are reflected in the R-2 district and elimination of the R-1B and R-UR districts.

4. The R-3 district has revised to allow multi-family as a permitted use in addition to the other residential use types.
5. The Residential PUD district has been revised as a Mixed-Use/Residential PUD.

Staff has also updated the definitions sections to provide additional definitions including use type definitions for more clarity in administering the zoning ordinance. Staff will be prepared for discussion to update City Council on proposed amendments and for joint discussion with the Planning Commission.

Adjournment

Mayor Frank Rabil adjourned the Work Session.

The Work Session was adjourned at 6:57 P.M.

Mayor

Clerk to City Council



**Recognition of Appreciation to Mayor Frank M. Rabil
Resolution 2022-30**

WHEREAS, The City of Franklin would like to honor the dedicated services of Mayor Frank M. Rabil to the residents and City staff of Franklin, Virginia; and

WHEREAS, Frank M. Rabil has served the citizens of Franklin, Virginia in various offices – first as a Councilmember of Ward 6, from 2014-2016, and as Mayor from 2016-2022; and

WHEREAS, Frank M. Rabil has worked together during his tenure, with City Manager Randy R. Martin, Interim-City Manager Clarence Monday, and the present City Manager, Amanda C. Jarratt; and

WHEREAS, Frank M. Rabil oversaw the Riverwalk Park project, making it easier for families to have access to safe and balanced recreation while encouraging healthy and active lifestyles; and

WHEREAS, Frank M. Rabil dedicated countless hours of his personal time in support of various civic organizations, local businesses, and City events during his time as Mayor; and

WHEREAS, throughout his leadership, supported the expansion of the Parks and Recreation Department and multiple capital projects throughout the City of Franklin, Virginia; and

WHEREAS, Frank M. Rabil successfully navigated the citizens of Franklin, Virginia, during the COVID-19 pandemic, along with the assistance of City Council, and City staff; and

WHEREAS, with the help of City Council and City staff, continues to put the City of Franklin, Virginia on the map to visitors and residents alike, with events such as, Small Business Saturday, the Annual Christmas Parade, the Franklin Fall Festival, Spring Fest, and so much more!

NOW, THEREFORE, BE IT RESOLVED, on behalf of the entire City of Franklin City Council, we want to express sincere appreciation to Frank M. Rabil for his exceptional service to the City of Franklin, Virginia and wish him much happiness and success as he begins this new chapter in his life.

AND, BE IT FURTHER RESOLVED, that a copy of this Resolution be spread upon the minutes of this meeting of the Franklin City Council as visible evidence of the high esteem in which this Council and the citizens of the City of Franklin hold Frank M. Rabil, thereby forever preserving and recording its gratitude.

Signed this 12th day of December 2022

Robert “Bobby” Cutchins, Vice-Mayor
City of Franklin, Virginia



**Arbor Day Proclamation
Resolution 2022-31**

WHEREAS, in 1872, J. Sterling Morton proposed to the Nebraska Board of Agriculture that a special day be set aside for the planting of trees; and

WHEREAS, this holiday, called Arbor Day, was first observed with the planting of more than a million trees in Nebraska; and

WHEREAS, Arbor Day is now observed throughout the nation and the world; and

WHEREAS, trees can reduce the erosion of our precious topsoil by wind and water, cut heating and cooling costs, moderate the temperature, clean the air, produce oxygen and provide habitat for wildlife; and

WHEREAS, trees are a renewable resource giving us paper, wood for our homes, fuel for our fires and countless other wood products; and

WHEREAS, trees in our city increase property values, enhance the economic vitality of business areas, and beautify our community; and

WHEREAS, trees wherever they are planted, are a source of joy and spiritual renewal; and

WHEREAS, the City of Franklin celebrates its 38th consecutive year as a Certified “Tree City USA,” honored by the National Arbor Day Foundation,

NOW, THEREFORE, BE IT RESOLVED, I, Frank Rabil, Mayor of the City of Franklin, Virginia, do hereby proclaim December 12, 2022 as Arbor Day in the City of Franklin, Virginia, and urge all citizens to celebrate Arbor Day and to support efforts to protect our trees and woodlands.

AND, BE IT FURTHER RESOLVED, urge all citizens to plant trees to gladden the heart and promote the well-being of this and future generations.

Signed this 12th day of December 2022

Frank M. Rabil, Mayor
City of Franklin, Virginia

BUDGET AMENDMENT 2023-11

BE IT RESOLVED BY THE COUNCIL OF THE CITY OF FRANKLIN, VIRGINIA that the 2022-2023 City Budget is hereby amended to:

1. recognize ARPA grant revenue from the Virginia Tourism Authority and to appropriate for use as approved by Council in its November 14, 2022 meeting;
2. recognize the School's supplemental appropriation of Federal revenue and to appropriate for use and to adjust FCPS budget to balance to City records; and
3. recognize federal revenue for the Airport Sinkhole Repair project and to appropriate for use; this project required a 20% local match.

		2022-2023 BUDGET		AMENDED BUDGET	INCREASE (DECREASE)
#1					
100 GENERAL FUND					
REVENUE					
250-3-24000-0202	Virginia Tourism Authority ARPA Grant	\$ -		\$ 30,000	\$ 30,000
					<u>\$ 30,000</u>
EXPENDITURES					
100-3-24040-1812	Virginia Tourism Authority ARPA Grant	\$ -		\$ 30,000	\$ 30,000
					<u>\$ 30,000</u>
#2					
250 SCHOOL OPERATING FUND					
REVENUE					
250-3-33010-0225	Title VIB Special Education	\$ 870,714		\$ 923,160	\$ 52,446
250-3-33010-0272	NCLB Grant - Title II A	190,000		175,117	(14,883)
250-3-33010-0273	NCLB Grant - Title III Part A	4,623		7,395	2,772
250-3-33010-0277	Title IV Part A LEA	80,000		78,261	(1,739)
250-3-33010-0224	Pre-School Grant VIB	35,104		44,089	8,985
					<u>\$ 47,581</u>
EXPENDITURES					
250-4-60000-0008	Title VIB Special Education	\$ 870,714		\$ 923,160	\$ 52,446
250-4-60000-0072	NCLB Grant - Title II A Tchr Quality	190,000		175,117	(14,883)
250-4-60000-0073	NCLB Grant - Title III Part A	4,623		7,395	2,772
250-4-60000-0077	Title IV Part A LEA	80,000		78,261	(1,739)
250-4-60000-0015	Pre-school Grant	35,104		44,089	8,985
					<u>\$ 47,581</u>

#3

504 AIRPORT FUND							
REVENUE							
504-3-33010-0420	Airport Improvements FAA	\$	-	\$	50,082	\$	50,082
504-3-41050-0100	Transfer From General Fund		51,848		64,368		<u>12,520</u>
						\$	<u>62,602</u>
EXPENDITURES							
504-4-20020-8449	Airport Sink Hole	\$	-	\$	62,602	\$	<u>62,602</u>
						\$	<u>62,602</u>
100 GENERAL FUND							
REVENUE							
100-3-41050-0150	Use of Unassigned Fund Balance	\$	595,167	\$	607,687	\$	<u>12,520</u>
						\$	<u>12,520</u>
EXPENDITURES							
100-4-93100-9273	Transfers to Airport Fund	\$	51,848	\$	64,368	\$	<u>12,520</u>
						\$	<u>12,520</u>

Certified copy of resolution adopted by Franklin City Council.

Clerk to the City Council



Franklin City Public Schools

207 West Second Avenue
Franklin, Virginia 23851-1713
(757) 569-8111 • Fax (757)516-1015

MEMORANDUM

TO: Amanda Jarratt
Franklin City Manager

FROM: Dr. Carlton Carter
Interim Division Superintendent

DATE: December 1, 2022

RE: Notice of Budget Adjustments

The Franklin City School Division requests that the following budget funds be adjusted to balance with city records for FY 2023.

Correcting entries

<i>Accounting Use Only</i>	<i>School Account</i>	<i>Amount</i>	<i>City Account</i>
SPED IDEA 611 – Rev Increase		\$ 52,445.69	250-3-33010-0225
SPED IDEA 611 – Exp Increase		\$ 52,445.69	250-4-60000-0008
Title II – Revenue Decrease		(\$ 20,277.58)	250-3-33010-0272
Title II – Expense Decrease		(\$ 20,277.58)	250-4-60000-0072
Title III – Revenue Increase		\$ 2,771.78	250-3-33010-0273
Title III – Expense Increase		\$ 2,771.78	250-4-60000-0073
Title IV – Revenue Decrease		(\$ 1,739.37)	250-3-33010-0277
Title IV – Expense Decrease		(\$ 1,739.37)	250-4-60000-0077
PRE School – Revenue Increase		\$ 8,984.94	250-3-33010-0224
PRE School – Expense Increase		\$ 8,984.94	250-4-60000-0015



Franklin City Public Schools

207 West Second Avenue
Franklin, Virginia 23851-1713
(757) 569-8111 • Fax (757)516-1015

MEMORANDUM

TO: Amanda Jarratt
Franklin City Manager

FROM: Dr. Carlton Carter
Interim Division Superintendent

DATE: December 1, 2022

RE: Notice of Budget Adjustments

The Franklin City School Division requests that the following budget funds be adjusted to balance with city records for FY 2023.

Correcting entries

<i>Accounting Use Only</i>	<i>School Account</i>	<i>Amount</i>	<i>City Account</i>
Title II – Revenue Increase		\$ 5,394.92	250-3-33010-0272
Title II – Expense Increase		\$ 5,394.92	250-4-60000-0072

The background features abstract, overlapping geometric shapes in various shades of green, ranging from light lime to dark forest green. These shapes are primarily located on the left and right sides of the page, framing the central white area where the text is placed.

City Treasurer's 2022 Annual Report

Delinquent Taxes as of
November 30, 2022

- ▶ The delinquent tax amount for the City of Franklin as of November 30, 2022 is \$427,135.84. This amount reflects tax years 2020 and older for all taxes owed to the city. The last collection report dated November 30, 2021 was reported with delinquencies of \$389,405.92. This is an increase of \$37,729.92. This increase is due to adding the delinquencies for tax year 2020 as well as the effects from Covid-19.

Real Estate:

- ▶ As of November 30, 2022 there is \$135,647.56 in delinquent Real Estate taxes for the Years 2003-2020. The delinquencies consist of 81 residential, 5 multi-family, 14 commercial and 1 tax exempt for a total of 101 properties. The cumulative collection rate for these tax years is 99.86%. The office continues to work with citizens who have become delinquent with payment plans prior to collection actions. We currently have 8 tax payers on monthly payment plans. The office uses VEC (Virginia Employment Commission) for employment information and attach a lien against their place of employment based on the Code of Virginia 58.1-3919. Currently the office has about 7 wage liens.
- ▶ The Treasurer's office continues to work with Jason A. Dunn, PLC (Tax Attorney) out of Virginia Beach to assist in selling properties who meet the requirements for a tax sale based on the Code of Virginia, 58.1-3965. There are currently 46 properties being worked by Mr. Dunn's firm. Prior to sending the file to the firm, the office has exhausted all possible efforts with the tax payer.

Real Estate Cont...

- ▶ Prior to properties being sold at a tax sale, Mr. Dunn's firm will enter into a payment plan with the taxpayer. Once they enter into a plan the taxpayer must stay current on the plan and pay all current taxes by the due date.
- ▶ In May of 2022 we had 7 properties finalized to go to sale. Prior to the sale 2 properties were paid in full and pulled from the sale. The remaining 5 were sold through a hybrid tax sale. All properties were sold for enough money to pay all delinquent taxes, nuisance liens as well as the attorney fees and auctioneer's fees. Having a hybrid tax sale gives a wider foot print of people bidding on the sale that other wise might not be able to make the sale in person. All bidders must qualify prior to being able to bid on properties.

Real Estate Cont....

- ▶ After the courts approve the highest bid, funds are disbursed to the City. If there are additional funds remaining and the property owner owes other monies to the city, I can request for those funds to satisfy the other delinquencies. Any remaining funds, the attorney is required to send those funds to the Clerk of Courts for a period of two years. If no one claims the funds the courts returns the balance to the city after the two year period.
- ▶ We are currently working on having another tax sale in the Spring of 2023.
- ▶ For the RE2021 tax year, of the 5.7 million budgeted, we have \$122,299.00 uncollected, showing a 98.3% collection rate as of November 30, 2022. Any payments paid on delinquent real estate is applied to the oldest tax first.

Personal Property:

- ▶ As of November 30, 2022 there is \$273,158.32 in delinquent personal property taxes for tax years 2014-2020. The cumulative collection rate for these years is 98%. Since the pandemic we have resumed adding the DMV-Stops to delinquent vehicles. This is a great tool used by Treasurer's offices across the state. Taxpayers cannot renew their tags until they have the Stop removed which requires taxes to be paid. We continue to work with taxpayers on monthly payment plans. Plans are usually made so that their taxes are satisfied prior to the next years assessments and due date. Any and all prior delinquent taxes must be satisfied prior to being able to make a new payment plan. We anticipate moving forward with vehicle seizures for delinquent taxes in the upcoming year.

Personal Property Cont...

- ▶ For PP2021 tax year, of the 2.8 million budgeted, we have \$218,665.21 uncollected, showing a 92% collection rate as of November 30, 2022. DMV Stops have been added to the vehicles that have been able to be located in the system. The office has been short staffed since March. As of date we have filled the 2 positions we were short. At times we were unable to actively collect the delinquencies due to the time of training.
- ▶ Due to the Statue of Limitations as per Code of Virginia 58.1-3040, I will requesting City Council to approve charging off personal property tax year 2014-2015 in the amount of \$23,392.23. Based on years of collection attempts, I deem these accounts uncollectable.

Meals and Lodging:

- ▶ Currently we have 3 restaurants that have delinquent meals taxes. These accounts total \$18,314.96. These are new to the City and the Commissioner of the Revenue has informed them of the issues of not filing on time. Once the Commissioner of the Revenue gets the information and assesses the amount due, I will meet with the owners and explained the requirements to them. I have all 3 restaurants on a weekly payment plan. I closely monitor these accounts. As long as the payment plans are met no additional collection or legal actions will be done.
- ▶ Currently there are no delinquent Lodging Taxes that have been filed with the Commissioner of the Revenue's office.

Business License:

- ▶ As of November 30, 2022 there is 1 delinquent business license in the amount of \$15.00. The business has been notified as well as the FBC about the unpaid license.

Historical Data:

▶	March	2010	\$1,531,0064.26
▶	August	2011	\$913,774.49
▶	August	2012	903,647.66
▶	September	2013	612,059.72
▶	October	2014	605,477.25
▶	June	2015	373,722.41
▶	October	2016	303,461.92
▶	November	2017	295,452.71
▶	November	2018	334,163.82
▶	November	2019	635,329.14
▶	November	2020	428,376.58
▶	November	2021	389,405.92
▶	November	2022	427,135.84

Additional Information:

The Treasurer's Office continues to use multiple collection tools allowed by the Code of Virginia 58.1. Listed below are a few tools used, but not limited to;

- ▶ DMV Stops
- ▶ Debt Set Off
- ▶ Wage Liens
- ▶ Virginia Auction Co-Vehicle Seizure-Distress Warrants
- ▶ Tax Sales-Judicial and Non Judicial
- ▶ Payment Plans

The office continues to look for new tools to collect delinquent taxes and delinquent utilities owed to the locality.

Collection Tools History:

- ▶ DMV Stops 1896 Submitted/683 Good/213 Removed
- ▶ Debt Set Off 1372 Payments, \$199,175.80 Received
- ▶ Garnishments/Bank Liens 20
- ▶ Tax Sale-Judicial Sale 5 Properties were sold
- ▶ Unclaimed Property -0-

The Treasurer's Association of Virginia filed a show cause against the Treasury of Virginia with General District Court. We continue to argue the reason as to why we should be able to file claims on the Unclaimed Property.

Treasurer's Office News:

Collection Percentage Rate for the Office:

- ▶ Cumulative Percentage for Real Estate for 2003-2020 is 99.8%
- ▶ Cumulative Percentage for Personal Property for 2014-2020 is 98%

The Treasurer's Office was awarded the Office Accreditation for the Ninth year in a row by the Treasurer's Association of Virginia. This is the highest award given by the association. To receive this award the office must have a collection rate of 95% or higher for Real Estate and 90% or higher for Personal Property.

As President Elect of The Treasurer's Association of Virginia I hosted the 91st Annual Conference in Virginia Beach in June "High Tides-Good Vibes, The City of Franklin Takes you to the Beach. We had an awesome conference with lots of Education as well as entertainment. I was sworn in as the president for the 2022-2023 year. It has been a humbling experience so far, as I have met many wonderful Treasurers and their staff across this beautiful state of Virginia. I feel honored to be able to represent the City of Franklin in this capacity. During the conference we do an annual project "TAV Gives Back", where the President gets to pick something dear to the treasurer's heart. I chose to do "Back Packs for Foster Kids". We collected over 100 back packs for various ages of children who may have to be placed in foster care. I worked with the Department of Social Services Director to get ages and list of items needed to help support the child. I was pleased to be able to bring this special need back to our locality. We also raised over \$500.00 to be given to the DSS special needs fund. After reviewing the conference's evaluations, it was rated one of the most rewarding projects that the association has done in the 7 years since we started the project.

Treasurer's Office News Cont....

- ▶ The Treasurer's office has contributed 248 non perishable items to the Franklin Cooperative Ministry this year. We did a little less than last year, but due to staff shortage, we were still able to continue this much needed community project.
- ▶ The Staff in the Treasurer's Office work hard to service the Citizens of Franklin to the best of their ability. We lost 1 employee to another department and another due to illness. I have since hired two new employees that are doing extremely well and handling the day to day operations. The entire staff does an awesome job and are dedicated to their positions even stepping in and doing jobs while others are out of the office. A BIG THANK-You goes out to the entire STAFF!



To: Amanda C. Jarratt, City Manager
From: Dinah M. Babb, City Treasurer
Subject: Annual Delinquent Tax Report
Date: December 05, 2022

Attached, please find the list of delinquent taxes owed to the City of Franklin as of November 30, 2021

Real Estate:	\$135,647.56
Personal Property:	\$273,158.32
Business License:	\$15.00
Meals Tax:	\$18,314.96
Lodging Tax:	\$0.00

Total Delinquent Taxes \$427,135.84

Respectfully Submitted
Dinah M. Babb, MGT
City Treasurer

Owner Name	Owner Name2	Tax Prin Balance
APPLING DAESHAWNA &	JAMIL ANDREWS	380.58
BALBOA HOLDINGS L L C		300.76
BARRETT MASCO & VELMA L	C/O PORTIA ROBERTSON	399.94
BLUE LIONEL A & GWENDOLYN		391.24
BLYTHE JUDY P LIFE RIGHT		2,822.20
BLYTHE JUDY P LIFE RIGHT		832.24
BOWERS ANTHONY E		294.58
BOYKINS ANGELA DENISE		157.59
BRADSBY DARRELL ET ALS		930.34
BREUCOP CESAR O		99.39
BREUCOP CESAR O		2,290.58
BRITT HENRY CLAY EST & RONNIE		672.69
BUTTS CLARENCE & GLADYS		658.87
CANNON TAMELA V		309.52
CANNON WILLIE JR ET ALS		1,874.70
CARTER CHERYL ET AL		231.76
CHARITY KENNETH J		447.12
CHARITY KENNETH J		1,698.35
CITY OF FRANKLIN		1,105.52
COOPER DEANGELA		143.68
COOPER DEANGELA		790.01
COOPER DEANGELA		303.33
DELOATCHE MARVIN R	C/O ANNETTE DELOATCH	73.02
EDWARDS TRACEY L		746.75
ELEY FAYE B		10,283.53
EXIT OUT L L C		133.90
EXIT OUT L L C		46.35
FORT HALE INVESTMENTS II L L C		622.95
FORT HALE INVESTMENTS II L L C		405.82
FRANKLIN EQUIPMENT CO INC		13,237.09
FRANKLIN EQUIPMENT CO INC		34,911.00
FRANKLIN EXPRESS MART LLC		39.52
FRANKLIN REALTY VENTURES L L C		667.44

FRANKLIN REALTY VENTURES L L C	949.66
FRANKLIN REALTY VENTURES L L C	371.83
FRANKLIN REALTY VENTURES L L C	732.33
FUNCHES DAISY M	317.84
GRANT TAMIKA C	382.64
HACKETT MONTY C & JEAN C	208.06
HACKETT MONTY C & JEAN C	1,314.12
HALL AKILAH M	322.53
HALL WILLIE JAMES ET ALS	212.03
HARRISON WILLIAM STANLEY ET ALS	442.38
HART FELEASE H ET ALS	61.76
HOPKINS CURTIS ET AL	1,061.69
HOPSON JACOB	77.25
HUDSON LAFAYETTE A JR	232.97
HUNT TONI ANNETTE POWELL	665.48
HUNT VANDY D & TONI A	863.32
INTEGRITY GROUP CONSULTING L L C	299.86
JOHNSON-ASHBURN RAYSTINE DESHON	6,452.94
JONES GAIL SPRUILL	423.88
JONES JOHN LOUIS ET ALS	445.00
LEWIS GEORGETTE S	804.32
LONG CHARLIE	115.63
LONG SHIRLEY WILLIS	235.39
MILIAN MICHELE ET ALS	711.73
MILLENNIAL VENTURES L L C	78.28
MONTAGUE DONALD & ARLENE	174.07
MURPHY ANNIE W	25.25
MURPHY GWENDOLYN A	677.56
PADGETT PATRICIA C	496.97
POLLARD PHILIP E & THELMA E	118.45
PORTER BRIAN JAMAAL	232.78
PORTER SHEILA T	359.47
RABIL F DAVID	14,030.25
RAWLS JAMES R	3,465.51

REID TIMOTHY E & ANGELIA D		174.58
RICHARDSON JAMES & TERESA A		238.96
RICKS A C EST	C/O BERNICE RICKS	327.44
RICKS A C EST	C/O BERNICE RICKS	131.32
RURAL DEVELOPMENT		378.01
SAUNDERS WILLIAM E JR		451.14
SHEARIN KENNETH & BONNIE Y		231.23
SMITH CYNTHIA, SYLVIA RIDDICK &	WINFRED RIDDICK JR	207.40
SMITH SHANNON MEGAN		19.57
SMITH SHANNON MEGAN		19.57
SPIVEY THEROME LEE SR		110.06
SPIVEY THEROME LEE SR		565.58
STORY VICTOR M		1,655.66
STORY VICTOR M & DEBORAH V		1,271.27
STORY VICTOR M & DEBORAH V		833.27
T & A ENTERPRISE L L C		148.32
TALJ PROPERTIES L L C		384.17
TALJ PROPERTIES L L C		4,762.48
TANNER BARBARA O		595.34
THE W COMPANY L L C		422.30
WALDEN THEODORE ET ALS		971.36
WALTON MYRA B ETALS		80.85
WALTON MYRA B ETALS		190.55
WALTON MYRA B ETALS		482.04
WARREN SONIA		558.96
WEINBERG PROPERTIES L L C		605.64
WEINBERG PROPERTIES L L C		726.15
WEINBERG PROPERTIES L L C		947.60
WEINBERG PROPERTIES L L C		1,280.29
WHITEHEAD MAXINE		79.31
WHITEHEAD MAXINE		147.80
YANNA BRANDON & JASON		298.70
YOUNG CHERYL		119.25
		135,647.56

Personal Property

Name	Name 2	Principal Balance	User Code 1	User Code 2
2 GIVE MANAGEMENT LLC		57.25	RET	
2 GIVE MANAGEMENT LLC		470.00	RET	
2 GIVE MANAGEMENT LLC		250.73	RET	
A & C HOME IMPROVEMENT		460.00		
A TOUCH OF CLASS III LLC	T/A COFIELD'S BARBER & BEAUTY SAI	18.54		
A+ PACK AND SHIP		43.76		
ABRAHAM CARRILLO-PEREZ		29.25		
ABUSHAAR HIMYAR AHMED		71.88		
ABUSHAAR HIMYAR AHMED		15.19		
ADAMS JENNIFER ELEANORA		115.80		
ADKINS CARRINGTON CARWELL JR		55.00	RET	
ADVANCE AMERICA CASH ADVANCE	CENTERS OF VA INC #1710	38.77		
AGATE JASON MATTHEW	AGATE WINNETTE MARIE	216.00	GAR	RET
AGATE JASON MATTHEW	AGATE WINNETTE MARIE	11.81	GAR	RET
AGATE JASON MATTHEW		34.24	RET	
AGATE WINNETTE MARIE	AGATE JASON MATTHEW	177.00		
AGATE WINNETTE MARIE		551.25	GAR	RET
ALEXANDER ADAMS SANYA EVETE	ADAMS BRIA LAUREN	463.19		
ALEXANDER ADAMS SANYA EVETE		250.68	RET	DEC
ALEXANDER CLARENCE KINCADE		165.00		
ALLSBROOK PATRICK RYAN		69.06		
ANDERSON JESSICA ANN		321.28	RET	
APALISKI MARY THERESA		130.78	RET	
ARGUETA CRUZ ALBERT ASael		48.00	RET	
ARKLAN JENNIFER ANN		819.70	RET	
ARMSTRONG TANISHA RENAE		48.00		
ARREY-MBI AGNES E		300.84	RET	
ARTIS EARL PURNELL		120.12		
ARTIS GLADYS SCOTT		136.20		
ARTIS JOEMON DEQUIA		102.20		
ARTIS-SWARN TAMIKA NICHOLE		131.20		
ASHBURN LUCY GRANT		123.00	RET	DEC
ASHBURN SHAMEYRA RONNICE		27.85		

ASKEW KEISHA MONIQUE		169.68	
ATKINS ANGELA GAIL		300.12	
ATLANTIC DEMOLITION INC		21.60	RET
AUSTIN SHELIA DIANE		196.86	
BABB SELESTER LEE		14.02	
BABIN GAIL JOYCE	POIRIER KELLIE LYN	282.62	RET
BACH CHRISTOPHER WILLIAMS		33.00	
BAILEY CAROL LINWOOD		23.00	DEC RET
BAILEY CAROL LINWOOD		49.44	DEC RET
BAILEY CAROL LINWOOD		135.75	DEC
BAIN SCOTT CHURCHILL		56.90	
BAKER MARJORIE ANN		194.74	
BAKER TERRANCE DAVONSKI		321.71	RET
BALL AMANDA JO		136.51	
BANKS RAIMON		246.01	DEC RET
BARANYAI DEANNA LYNETTE		186.92	DEC RET
BARNES ANTHONY DESHON		50.66	RET
BARNES RAYMOND THOMAS	BARNES BRIAN ONEAL	427.94	
BARNES SYLVIA ANN		191.18	DEC
BARNES SYLVIA ANN		88.28	
BARR ANTHONY		115.00	
BARR ANTHONY		529.68	
BARR BRENDA KAYE		59.18	
BARR BRENDA KAYE		69.93	
BARR NATHAN JR		137.78	DEC RET
BARR NATHAN TARRANCE		28.00	
BARRETT CHARLIE DAVIS		23.00	
BARRON QUADAESUA MONIQUE		193.39	
BARRON QUADAESUA MONIQUE		144.53	
BASHIR NAEEM Q ESTATE		82.50	DEC RET
BASHIR NAEEM Q		110.67	DEC RET
BASS PATRICIA HALL		76.94	
BAUTISTA JIMENEZ LOYDA JAEL		127.50	RET
BAXTER TARA LAWRENCE		11.25	

BAZEMORE KWAMAINE RASHAD	23.00		
BEACHAM VERNON S JR	49.80	DEC	RET
BEALE ROY JR	331.92		
BEAMON REBECCA JEAN	99.29		
BEAMON REBECCA JEAN	115.00		
BEASLEY MICHAEL REID	101.00		
BELL QUIARA CHANTELL	119.81	INV	
BELTER REBECCA MARIE	111.38		
BENN JOSEPH LAMOND	496.60		
BENN JOSEPH LAMOND	888.89		
BENN LARRY ALEXANDER	31.72	RET	
BENNETT DERIC DONTE	89.87		
BENTON EDITH LORRAINE	124.62		
BENTON EDITH LORRAINE	179.87		
BENTON SHANIA LASHAE	115.50		
BENTON-SMITH LATOYA	42.48		
BEST DERRICK DERRON	76.19		
BEST DERRICK DERRON	108.28		
BILLUPS TARA CHEVON	95.22		
BILLUPS TARA CHEVON	582.49		
BILLUPS TARA CHEVON	12.89		
BILLUPS TARA CHEVON	45.12		
BINNS MARQUIS'E DEVON	56.55		
BISHOP DONALD AR'KEEM	85.13	RET	
BISHOP DONALD AR'KEEM	151.44	RET	
BISHOP DONALD AR'KEEM	242.92	RET	
BISHOP DONALD AR'KEEM	40.09	RET	
BISHOP DONALD AR'KEEM	594.30	RET	
BLACKLEY RENEE LUCINDA	314.42		
BLANKENSHIP SANDRA MORGAN	513.38		BLANKENSHIP MICHAEL LYNN
BLANKENSHIP SANDRA MORGAN	61.25		
BLANKENSHIP SANDRA MORGAN	399.31		
BLIGEN-HALLBROOKS LORENE	15.06	RET	
BLOW ATORYA LAVERNE	50.42		

BLOW TOMEKA DENICE		88.94	
BLUNT KAMONTAE ANDREW		33.72	
BODDIE TIFFANY RENEE	BODDIE JAMES BURNELL	138.00	
BODINE ALICIA HOPE		544.06	
BOGLIN DELLA MAE		114.82	DEC RET
BOGLIN DELLA MAE		108.75	
BOGLIN FALICIA RENE		23.00	
BOONE AUDREY LEE		147.00	DEC RET
BOONE BOBBY JR		112.00	
BOONE BOBBY JR		92.00	
BOONE BOBBY JR		48.80	DEC
COOLEY CAROLYN HOLLEY		397.15	
BOONE CHRISTIAN DEVANTE		287.67	
BOONE CURTIS JUNIOR		34.85	
BOONE DARYL REGIS		46.00	RET
BOONE DARYL REGIS		140.00	RET
BOONE DERRICK ASRIAH		998.22	
BOONE DONNIE RAY		275.53	RET DEC
BOONE DOROTHY JEANETTE		103.00	
BOONE FIESTA JEAN		76.66	DEC
BOONE HATTIE MYRICK		62.08	
BOONE JU-WANA JON-QUIL		108.94	
BOONE JU-WANA JON-QUIL		145.81	
BOONE JU-WANA JON-QUIL		98.14	
BOONE LACURT DEON		361.53	
BOONE LACURT DEON		62.59	
BOONE LACURT DEON		45.96	
BOONE LACURT DEON		116.64	
BOONE LAMANESIA YVETTE		117.49	RET
BOONE LATISHA SHANTE		47.34	
BOONE ROBERT		612.07	
BOONE SHAMIERE BERNARD		229.18	
BOONE SHAREL LAVON		198.28	
BOONE SHAREL LAVON	EPPS RODERICE DEXTER	175.32	

BOONE SHAYONNA LASHAY	78.00		
BOONE SHEANDRA NASHAY	72.81		
BOONE SHEANDRA NASHAY	297.93		
BOONE SHEANDRA NASHAY	38.94		
BOOSE SHELLY ANTIONETTE	49.36	DEC	RET
BOTTOMS ELLIOTT DESHAUN	78.00		
BOWE ALPHONZO FRANKLIN	27.00		
BOWENS TORRENCE	124.00		
BOWERS ADENA MARIE	211.71		
BOYCE APRIL LYN	101.00		
BOYETTE CHRYSTAL MARIE	137.62		
BRADLEY CYNTHIA ANN	112.30		
BRADLEY CYNTHIA ANN	92.79		
BRADLEY CYNTHIA ANN	114.06		
BRADLEY KESHARA MONI	405.25		
BRADSHAW ALESHA	88.58		
BRADSHAW ALESHA	47.84		
BRADSHAW IYANAH SHANTERA	121.69		
BRADSHAW SHILDER VIRGINIA	25.52		
BRADSHAW SHILDER VIRGINIA	22.68		
BRADSHAW TIMOTHY C	144.94		
BRADSHAW TRUCKING LLC	495.00		
BRADSHAW-TURNER JANICE WALETTE	499.19		
BRANCH BELINDA WOODLEY	162.25		
BRANCH CLIFTON BERNARD	206.15		
BRANCH CLIFTON BERNARD	222.13		
BRANCH CLIFTON BERNARD	85.73		
BRANCH CLIFTON BERNARD	124.00		
BRANCH EDWARD EUGENE	23.00		
BRANCH EDWARD EUGENE	176.58		
BRANCH ISCON DAMONTRE' DAVI	113.06		
BRANCHE KAREN RUTH	270.84		
BRANCHE KAREN RUTH	40.85		
BRENCHICK JAY AUSTIN	6.75		

BRENCHICK JAY AUSTIN	272.62
BRENCHICK MARY ANN	215.81
BREUCOP CESAR OVIDIO	96.06
BRITT GISELLE WAYVLE	45.73
BRITT JERELL UNDONTE	78.00
BRITT SHIRLEY MAE	17.44
BRITT TIMARA NICOL	124.00
BRITT TIMARA NICOL	158.94
BRITT TIMARA NICOL	322.43
BRITT TIMARA NICOL	269.74
BRITT TRACY BERSHAW	19.66
BRITT TRACY BERSHAW	36.95
BRITT WILLIAM WAYVLE III	43.15
BROCKERS MEOSHA ALEXUS	111.94 RET
BROOKS DASIANEE SHAWNIECE	117.00
BROOKS LILLIE PEARL	251.68
BROOKS LILLIE PEARL	71.12
BROWN ANTHONY ANTWON	257.41
BROWN ANTHONY ANTWON	86.41
BROWN DONELL LEMONT	270.25
BROWN DONELL LEMONT	26.83
BROWN DONTE TERRELL	101.00
BROWN GARY	23.54 RET
BROWN GARY	534.14 RET
BROWN JOSEPH MCCOY	138.00
BROWN JOSEPH MCCOY	601.72
BROWN MICHAEL TREVANTI	8.10
BROWN MICHAEL TREVANTI	383.25
BROWN MICHAEL TREVANTI	28.00
BROWN MICHAEL TREVANTI	328.55
BROWN TOWANDA YVONNE	69.00 RET
BROWN TOWANDA YVONNE	85.51 RET
BROWN TOWANDA YVONNE	97.28
BROWN TOWANDA YVONNE	49.25

BROWN TRAVIS CORNELIUS		23.00	RET	
BROWN TYRELL DAU'TE		101.00		
BROWN TYRELL DAU'TE		112.56		
BROWN TYRELL DAU'TE		39.53		
BROWN WILLIE		140.00	RET	
BROWN WILLIE		84.24	RET	
BRYANT DAJUAN JARRELL		252.22		
BRYANT DEVIN AARMONTRE	MAZUREK MADELYN JANE	78.00		
BRYANT JAVANNA KESHANTA		193.57		
BRYANT JAVANNA KESHANTA		23.00		
BRYANT JAVANNA KESHANTA		41.37		
BRYANT KATINA YVETTE		35.45		
BRYANT NIKKI PRACTIES		90.95		
BUCHANAN SHARON DELORES		729.63		
BULLOCK QUAMAR KASOHD		36.62		
BULLOCK QUENTIN		353.00		
BUMPUS BRIAN SCOTT		86.47		
BURGESS JACOB KENNETH		69.00		
BURGESS JACOB KENNETH		68.25	RET	
BURKE KIM MICHELLE	BRADSHAW MICKEY LEE	203.66	RET	
BURTON LASHUN DEMAR		174.31	RET	
BUSY LITTLE PEOPLE FAMILY HOME	CHILDCARE	39.69		
BUTLER NATHANEIL JAMARA		201.12		
BUTLER RONALD WESLEY		422.91		
BUTLER RONALD WESLEY		46.00		
BUTLER RONALD WESLEY		26.75		
BYNUM BRANDON SHEROD		301.12		
BYNUM EDWARD BRADLEY		49.26		
BYNUM EDWARD BRADLY JR		109.87		
BYNUM STEVE LARRY		23.00	DEC	RET
BYNUM STEVE LARRY		6.78	DEC	RET
BYNUM STEVE LARRY		138.00	DEC	RET
BYNUM TIERRA MONQUIA		104.50		
CLAUDE TYNESHIA DEE		23.00		

BYRD MARY FRANCES	BYRD DONALD LEE III	100.03	
BYRUM BRITTANY LYNN	BYRUM NATHAN ALAN	99.17	
BYRUM BRITTANY LYNN	BYRUM NATHAN ALAN	685.78	
BYRUM NATHAN ALAN		46.62	
BYRUM TREE SERVICE		255.90	
C & C RENOVATIONS & HOME REPAIR		9.00	RET
C&C RENOVATIONS LLC		166.94	RET
CAHOON BRETT SCOTT		474.09	
CALIMER CHRISTIAN RAINER		52.03	
CAMPBELL WESLEY ALLEN		78.00	
CARE GIVING ON WHEELS LLC		22.50	
CARINO ALEXANDER RUBEN		198.58	RET
CARR CASSANDRA M		78.00	
CARR RENE DENEEN		147.00	
CARR RENE DENEEN		51.12	
CARR TIFFANY NICHOLE		83.00	RET
CARROLL SHAYLA ALLYSHA		46.20	
CHAFFIN CHRISTOPHER STEPHEN JR		637.36	
CHAMBERS DOMONIQUE TARELLE		78.00	
CHARLES WILLNEISHA ELIZABETH		208.81	
CHARLES WILLNEISHA ELIZABETH		170.07	
CHAVIS GENNIE III		656.63	RET
CHAVIS ROSE MARIA		386.14	
CHAVIS ROSE MARIA		221.43	
CHESAPEAKE BAY ENT		6.14	
CLARK NAKEIA R		947.11	RET
CLASSIC TOUCH MOBILE DETAILING		5.63	RET
CLEMONS RACHEL ANN		182.62	
CLEMONS SHANICE GWENDOLYN		16.61	
CLINE DONALD RAYMOND		926.54	RET
CLORE EMMIT BRUCE III		278.34	
CLOVER JOHNNAY BEATRICE IRENE		118.78	
COBB OSCAR VANN		138.00	DEC RET
COBB SHELTON HARRELL		124.00	RET

COLE MELVIN RENARD		145.50	
COLLINS MARSHA LEE ALLEN		189.00	DEC RET
COLSTON CHARLES RUBEN		23.00	
CONSTANTINE JENNIFER ANN		150.60	
KELLEY TISA KAREN		101.00	
COOPER AERION TASHCHIA		139.37	
COOPER ASHLEY STARR		637.29	
COOPER KAREN PHELPS		18.12	
COOPER LARSHAREE DEREZ		18.73	
COOPER LARSHAREE DEREZ		518.88	
COOPER LARSHAREE DEREZ		52.42	
COOPER LARSHAREE DEREZ		23.00	
COOPER LARSHAREE DEREZ		50.69	
COOPER LARSHAREE DEREZ		130.77	
COOPER LARSHAREE DEREZ		42.26	
COPELAND CHRISTOPHER CALVIN		139.00	
COPELAND CHRISTOPHER CALVIN		84.00	
COPELAND DARRELL ANTONIO		210.47	
COPELAND ROLAND III		112.50	
COPELAND ROLAND III		238.75	
COPELAND SHERVONDA TERISHA		155.93	
COURTESY HOMES LLC		23.22	
CRABLE TIMOTHY EDWARD		531.99	RET
CRAIG ANGEL UNIQUE		124.00	
CRAMER SONJA TURNLEY ESTATE	HOLLEY SUNNI LAUREN	460.92	
CREATIVE EVENTS LLC		112.50	
CREMEANS SHANE		23.00	
CREMEANS SHANE		177.20	
CREMEANS SHANE		46.00	
CREMEANS SHANE JR		78.00	
CROCKER NAPOLEON SR		77.17	DEC RET
CROCKETT BRIAN DEMOND		928.32	
CROCKETT ERNEST JR		485.31	
CROCKETT ERNEST JR		311.05	

DICKENS NORMAN LEE		916.29 RET
DICKENS PERCY M		124.00
DIXON ADONIS SHALON		138.00
DOBSON DORREEN KEM		44.26 RET
DONLEN TRUST		1,147.92
DONNA JOSEPH JAMES JR	LEACH KIMBER LYNETTE	21.06
DORITY-SHANKLIN TRACI SHANNON		138.00
DORSEY-ADOGA APRIL BROOKE		180.51
DOTSON CONRAD JEROME		23.00 RET
DOTSON CONRAD JEROME		23.00 RET
DOTSON CONRAD JEROME		23.00 RET
DOUGLAS JAMAR MONTREL		138.00
DOUGLAS JULIA T		1,254.13
DOYLE BRIAN LEE		123.10
DOZIER BRANDON JAHMAL		444.03
DRAKE MICHELLE DREWRY		5.58
DREWRY ANDREW BRIAN		46.00
DREWRY ANDREW BRIAN		46.00
DREWRY ANDREW BRIAN		699.38
DREWRY SAMUEL PARKER	DREWRY LUCY JONES	206.72
DREWRY SAMUEL PARKER	DREWRY LUCY JONES	588.52
DREWRY SAMUEL PARKER	DREWRY LUCY JONES	56.14
DUCK CHARLES ROBERT		47.28
DUCK CHARLES ROBERT		138.00
DUCK CHARLES ROBERT		33.78
DUCK DOROTHY CUTCHINS		45.10
DUNN BRADLEY LAURON		78.00
DUNN CHELSY P		674.28
DW FAMILY HOME CARE INCORPORATED		7.29
DZIEKAN AMANDA MAY		156.01 RET
EAGLE AUTO SALES		16.89
EASON SARAH D	EASON STEVE E	988.93
EASON TONY CAMILLA		92.00
EASON TONY CAMILLA		92.00

EASON TONY CAMILLA	257.25
EATON KEITH JEROME	69.00
EATON KEITH JEROME	193.00
EATON KEITH JEROME	69.00
EATON KEVON JA'MEISHA	122.87
EATON KEVON JA'MEISHA	58.82
EATON MARQI	229.57
EDWARDS ELIZABETH VANN	294.77
EDWARDS GAYLYN	91.99
EDWARDS GAYLYN	17.90
EDWARDS GAYLYN	144.53
EDWARDS RICKY DESHAUN	138.00
EFS CREDIT TRUST	3,060.00
ELAM DIYANTI RASHAAD	383.60
ELDER LUTHER JR	72.90 DEC
ELDER TERRY ANTHONY	183.69
ELDER TERRY ANTHONY	505.43
ELDER TERRY ANTHONY	173.68
ELDER TERRY ANTHONY	449.19
ELEY DEAUNDRA LAUQISHA	99.53
ELEY DEAUNDRA LAUQISHA	54.50
ELEY DEAUNDRA LAUQISHA	104.22
ELEY DEAUNDRA LAUQISHA	48.51
ELEY SHARON MALINDA	313.11
ELEY SHEMIKA KATRINA	193.00
ELEY SHEMIKA KATRINA	193.00
ELEY VICKI LOUISE	23.00
ELEY VONTRAYA LA'VORIS	222.09
ELLIOTT GOLDIE BERNICE ESTATE	82.23
EMIZINE ABBOTT JR	289.50
ENNIS CURTIS JUNIOR	546.71
ENNIS CURTIS JUNIOR	593.66
ENNIS CURTIS JUNIOR	23.00
ENNIS KIARA RICOLE	89.12

ENNIS SHAWN DEMETRIUS		26.25	
ENNIS VIOLA LORAIN		9.88	
ENNIS VIOLA LORAIN		23.00	
EPPS ANDREA MARIE		169.75	
EPPS MAURICE DUPREE		23.00	
ESPINOZA PACHECO MARIBEL	PACHECO TOMAS JR	931.38	
ESPINOZA TA DEO ANIBAL		42.84	RET
ESTEBAN AMBROCIO ERWIN		43.87	
ESTEBAN AMBROCIO ERWIN		28.12	
EVANS BRANDON MARQUI		10.53	RET
EVANS BRANDON MARQUI		23.00	RET
EVANS JACQUITA ANGENETTE		96.00	
EVANS JANET MARIE		47.65	
EVANS JULIS TYRONE		507.85	
EVANS JULIS TYRONE		82.64	
EVANS LAVON DEMONTE		111.00	
EVANS LAVON DEMONTE		46.00	
EVANS LAVON DEMONTE		46.00	
EVANS RONELL ELLIS JR		87.44	
EVANS RONELL ELLIS JR		28.00	
EVANS SHAQUILLE RASHARD		23.00	
EVANS SHAQUILLE RASHARD		23.00	
EVANS SHAQUILLE RASHARD		23.00	
EVANS TREVORIS MONT'E	EVANS JULIS TYRONE	108.00	RET
EVANS YVONNE	EVANS JULIS TYRONE	240.36	RET
EVANS YVONNE	EVANS JULIS TYRONE	37.09	RET
EVERETT CEDRIC LAMONT		55.00	
EVERETT MCARTHUR		254.34	
EVERETT SHAY-RON LAMAR		146.62	
EVERETT SHIRLEY		101.00	
EVERETTE DUSTIN LAMARO	LIVERMAN PEGGY EVERETTE	595.60	
EVERETTE KIM ALEXANDER		173.19	
EVERETTE SUAVAE RONDAZ		62.77	
EVERETTE SUAVAE RONDAZ		23.00	

GAR

EXCELLENCE PROPERTY MANAGEMENT		355.03	
F HAYNES BYERLY REVOCABLE LIVING	TRUST ESTATE	75.53	RET DEC
FALCONE ALEXANDER JOHN		124.00	
FARFAN-SALAS ADAM VINCE		28.00	
FAULCON VERNELL LOUISE		21.87	
FAULCON VERNELL LOUISE		152.69	
FAULK DUWANE MAQUECE		20.06	
FAULK DUWANE MAQUECE		46.00	
FENNER DEVINE DEVONTE		23.00	
FERGUSON SHEMIKA		139.73	
FILES HERSEY LEE JR		78.00	DEC
FLEETWOOD SHAVON ALVITA		112.44	
FLEETWOOD-BROWN KIMBERLY		22.05	
FLEETWOOD-BROWN KIMBERLY		9.63	
FLESHMAN PETER JOHN		273.80	RET
FLIPPO RICHARD C		223.00	
FLIPPO RICHARD C		477.37	
FLOOD APREAL RODONA		80.22	
FLOOD APREAL RODONA		79.89	
FLOOD APREAL RODONA		242.65	
FLOUR POT CAKERY LLC		493.86	
FLYTHE ASHLEY LYNETTE		171.08	
FLYTHE MELVIN		124.00	
FLYTHE MELVIN		25.58	
FMS INTERNATIONAL LLC		10.95	
FORD ADONIS LETROY		1,119.15	RET
FORD DRELYN LATRELL		235.78	
FORD MONICA CONTRICE		109.67	
FORD UNA DYNEAN BENN		220.24	
FOTOS APRIL		342.80	
FRANKLIN AUTOMOTIVE LLC		133.89	
FRANKLIN AUTOMOTIVE LLC		165.00	
FRANKLIN AUTOMOTIVE LLC		130.00	
FRANKLIN JOYCE VIOLA		23.00	

FRANKLIN JOYCE VIOLA		220.95	
FRANKLIN OUTREACH CHURCH		84.00	RET
FRAZIER SONYA HUDSON		57.23	
FREEMAN CHANTA ME'CHELLE		172.44	
FREEMAN DEWAYNE LEMAM		115.00	
FRENCH JUDY ROSE		101.00	
FRENCH JUDY ROSE		5.06	
FREY NATHANIEL EUGENE		440.05	
FRIIS GENA FAY		67.38	
FRIIS GENA FAY		7.04	
FRIIS GENA FAY		62.44	
FULLER CAROL ANN		891.57	
FULLER CHRISTOPHER ALLAN	FULLER DARLENE CHERYL	117.19	
FULLER DARLENE CHERYL		199.15	
FUNCHES ROBERT LYNN		11.28	
FUNCHES ROBERT LYNN		23.00	
GAINES DION GRATTON REUBEN		30.85	
GAINNEY LEROY	C/O CHRISTINA LEWIS	123.62	
GAINNEY MARY JONES		74.92	
GAINNEY-BENN GWEN		182.56	
GALLOP RAY CECLEPHUS		9.62	
GARCIA CAITLYN CHRISTINE		269.89	
SPRUIILL MARIA ELLENA		46.00	
GARRIS FALCONETTO BYNUM		188.10	
GARVIN SHAN'QUANTA SHAKIRA		138.00	
GATLING RANDY		103.50	
GATLING-SHAW RANITA RYSHAD		276.09	
GAY MICHAEL NATHANIEL		138.00	
GAYLE RUSSELL SAGE JR ESTATE	C/O ROBIN RUDD	136.85	RET DEC
GEARY CHRISTINA MARIE		45.93	
GELCO CORPORATION	C/O HEWLETT-PACKARD CO	2,312.85	
GENESIS WORLDWIDE SERVICES INC		382.81	
GIBBS ALEXANDRA CARTIER		72.82	
GIBBS ALEXANDRA CARTIER		22.36	

GILES JUAN MICHELLE		93.87	
GILES MATTHEW	SIMMONS SHENEIKA LEE	579.62	RET
GIORGI SAMANTHA RENEE		314.46	RET
GIORGI SAMANTHA RENEE		251.12	RET
GIORGI TIMOTHY EDWARD		9.05	RET
GIORGI TIMOTHY EDWARD		157.78	RET
GLOBAL ESTATES INVESTORS LLC		165.00	
GOLDEN CHINA BUFFET		400.23	RET
GOODE EARL BILL		138.00	DEC RET
GOODE KEVIN DALE	C/O JANET GOODE	99.96	
GOODMAN WILLIAM		402.52	
GOODWYN AMBERLY DAWN		162.87	RET
GOODWYN RANDOLPH		116.76	
GOODWYN RANDOLPH		93.00	
GOODWYN SAMUEL		40.50	DEC RET
GORDON CASSANDRA YVETTE		46.00	
GORDON CASSANDRA YVETTE		101.00	
GORDON CHARLES ROSS JR		92.00	DEC RET
GORDON MARQUISE DERELLE		93.40	
GORDON MARQUISE DERELLE		291.46	
GORE TIMOTHY JEROME		234.81	
GORE TIMOTHY JEROME		160.42	
GOURDINE ALICE MARIE ESTATE		69.00	
GRAHAM APRIL CAMPBELL		204.13	
GRAHAM LEE ANN		55.00	
GRANGER DERRICK TYQUAN		152.81	
GRANGER DERRICK TYQUAN		125.94	RET
GRANT BETTY JEAN		142.75	RET
GRANT BETTY JEAN		124.00	
GRANT YVONNE C ESTATE		14.76	DEC
GRANT OTIS LEE III		341.37	
GRANT TRACY MOORE		34.02	DEC RET
GRANT TRACY MOORE		195.00	
GRAY MITCHELL POWELL		105.66	DEC RET

GRAY MITCHELL POWELL		78.00 RET	DEC
GRAY MITCHELL POWELL		71.94 DEC	RET
GRAY NANCY HART	T/A SECOND TYME AROUND	22.42 RET	
GRAY NANCY HART		139.98 RET	
GRAY RANDY WAYNE		94.37	
GRAY SUSAN LORRINE		117.54 DEC	
GREEN ANGELA MARIA		65.00	
GREEN CRYSTAL L		339.18 RET	
GREEN FRANCIS ELICE		18.91	
GRIFFITH STACY LEIGH	GRIFFITH AARON MARK	78.00	
GRIMM COLTEN VERNIE J		165.25	
GRIMSHAW TONY VERN		473.50	
GRIMSHAW TONY VERN		418.50	
GRINDSTAFF SADIE I		61.81	
GRINDSTAFF SADIE I		40.34	
GRIZZARD LEIGH ANN		272.52	
GROOMS DELONTA DEMON		91.37 DEC	
GUEVARA GUTIERREZ MIGUEL A		138.84	
HAMELL DESMOND M		82.00	
HAMRICK ASHLEY NICOLE		644.14	
HARDY LAJUAN LAMONTE		148.70	
HARDY LAJUAN LAMONTE		170.00	
HARGRAVE ROGER L ESTATE		187.04	
HARGROVE BRUCE		81.25	
HARGROVE YOLANDA		260.10	
HARGROVE YOLANDA		88.08 DEC	RET
HARGROVE YOLANDA		60.11 DEC	RET
HARGROVE YOLANDA		14.04 DEC	RET
HARMON ANGEL DARISHEA		23.00	
HARMON SHIKITA MONIQUE JEAN		121.72	
HARPER ANNIE JEAN		290.61	
HARPER ANNIE JEAN		46.00	
HARPER ANNIE JEAN		57.08	
HARPER CALVIN DELEWARE		414.95	

HARPER THERESA CAROL	107.11
HARRIS CHRISTIAN CIARA	465.28
HARRIS EPPER WAYNE	277.56 RET
HARRIS JULIA RAWLINGS	198.23
HARRIS LICHELLA ELLA	132.75
HARRIS LUKE MANLEY JR	115.00
HARRIS MELVIN MCCOY	337.50
HARRIS MELVIN MCCOY	92.47
HARRIS MELVIN MCCOY	23.00
HARRIS MELVIN MCCOY	7.78
HARRIS MELVIN MCCOY	6.28
HARRIS NAYLANNI NATORI	64.06
HARRIS RYAN WILLIAM	309.09
HARRIS SHIRL VERONICA	57.12
HARRISON TAHISHIA ROCHELLE	37.20
HARRISON WILLIAM STANLEY	69.06
HARRISON WILLIAM STANLEY	310.09
HARRISON WILLIAM STANLEY	56.00
HARVEY WILLIAM MCKINLEY JR	23.00
HARVEY WILLIAM MCKINLEY JR	503.91
HAYES KATRINA PATRICE	23.00
HAYES LARRY LEE	138.00
HAYES LARRY LEE	138.00
HAYES LARRY LEE	138.00
HAYES-JONES IRIS	95.30
HAYNES LESHAUN DEMARR	127.25
HEALTHY LIVING VARIETY STORE	9.20 RET
HEATH TAMARA DANYEL	23.00
HEATH TAMARA DANYEL	226.74
HEATH TAMARA DANYEL	23.00
HICKS CHERIE TANN	450.82
HICKS SHIRLEY MAE	115.00
HILL LAQUISHA TEONDRA	101.00
HILL LAQUISHA TEONDRA	23.20

HILL LAQUISHA TEONDRA		25.50	
HILL LAQUISHA TEONDRA		7.59	
HILL ROOSEVELT III		161.79	
HILL ROOSEVELT III		121.24	
HOBBS DIANE MUSSETTE		193.25	
HOBBS RENITA ANNE		23.00	
HOBBS WELDON TEE JR		121.25	
HOBBS WELDON TEE JR		57.87	
HOFFMAN HEATHER ANISSA		97.18	
HOLDEN TERESA		78.00	
HOLIDAY KENNY	HOLIDAY TAMMIE MARVA	364.83	
HOLLAND CONSTANCE ANISSA		75.77	
HOLLAND JAMES EDDIE		78.00	
HOLLAND LOTTIE GENEVA		280.00	RET DEC
HOLLAND LOTTIE GENEVA		92.00	DEC RET
HOLLAND LOTTIE GENEVA		108.84	DEC RET
HOLLAND MICHAEL ANTHONY JR		61.94	
HOLLAND MICHAEL ANTHONY JR		21.91	
HOLLAND PAUL EDGARD		283.50	
HOLLAND THOMAS COFIELD		42.19	DEC
HOLLAND TRACE LP	C/O RELATED AFFORDABLE	579.38	
HOLLEY MILTON ANDRI JR		78.00	RET
HOLLEY MILTON ANDRI JR		377.47	RET
HOLLEY MILTON ANDRI JR		171.86	RET
HOLLOWAY CURTIS LEE		168.00	
HOLLOWAY JOHN ROOSEVELT		117.02	
HOLLOWAY JOHN ROOSEVELT		81.42	
HOLLOWAY RUTH EDNA		51.16	
HOLMAN NAZARETH JR		177.49	DEC RET
HOLMAN THOMASINA SKIPPER		124.00	
HOOD KRYLAMESHA FREDERICKA		118.50	
HOPKINS CURTIS LEON		617.14	
HOPKINS MAURICE ELTON		163.27	RET
HOPPER MICHAEL DOUGLAS		363.29	RET

HORTON ROBIN LYNN		171.98	
HORTON VANDA RONALD III		69.76	RET
HORTON VANDA RONALD III		250.56	RET
HORTON VANDA RONALD III		61.09	RET
HOUSE JAKITA SHAVAE	EVANS JAMES CALVIN	54.90	
HOUSE TIMOTHY SHAWN		28.00	
HOWELL ELIZABETH ANN COX		193.00	RET
HOWINGTON BARRY ALAN JR	COLBERT MERCEDES LANDOE	62.28	
HUDSON DURAY ANDRELL		99.38	
HUDSON JASMINE RAIZELLE		16.67	
HUDSON SYVONYA CLARICE		83.00	
HUNNINGS DAVID LEE		78.00	
HUNT CAPTOLIA D		10.90	DEC
HUNT DAVAR LA'QUIN		203.04	
HUNT FRITZ WARDEL		23.00	DEC
HUNT MAURICE TERRELL		6.00	RET
HUNTER NIQUITA LEE		203.50	
HUNTER NIQUITA LEE		87.63	
HUNTER NIQUITA LEE		388.13	
HUNTER NIQUITA LEE		87.21	
HUNTER PAUL JAMES		549.94	
HUNTER SHACHIA DALPHONE SAMYRA		219.64	
HUNTER TONYA LYVETTE		57.45	
IDISI ABIGAIL LEAH		35.71	
IDISI EMILY		53.94	
IDISI FREIDA GALLOWAY		43.87	
IDISI ROSEMARY OMOTEJOWHO		310.51	
INNER VISION COUNSELING GROUP		122.50	
J & M CONTRACTING		508.47	
J & M CONTRACTING		627.97	
J & M CONTRACTING		1,020.94	
J & M CONTRACTING		209.50	
J & M CONTRACTING		66.20	
JACK BYRON		445.12	RET

JACKSON REGINA MARIE		122.94	
JACKSON KERVELL LAMAR	JACKSON MARIA THERESA	147.75	
JACKSON KERVELL LAMAR	JACKSON MARIA THERESA	321.69	
JACOBS JONELLE BONITA		23.00	
JANNEY KENNETH PALMER		138.00	
JARRATT MICHAEL LEE		23.00	
JARRATT MICHAEL LEE		357.66	
JAUHARI SABU ABDUL		316.50	
JEFFERSON BARBARA MECHELL		23.00	
JEFFERSON QUAYSHAUN TILEK		78.00	
JEFFERSON QUAYSHAUN TILER		75.33	
JENKINS AIREAL CHEYENNE		78.00	
JENKINS JASMINE SHETERRA		135.03	
JENKINS LOIS		138.00	RET
JENKINS LOIS	JENKINS JAMES	66.15	RET
JERNIGAN KENNETH WAYNE		62.59	
JEWETTE DANIELLE ELIZABETH		78.00	
JOHNSON AUTURO JOHN III		94.56	RET
JOHNSON BRANDY LEE		108.69	
JOHNSON CALVIN LEE JR		458.47	
JOHNSON DASHAWN JAMAL		241.89	
JOHNSON DASHAWN JAMAL		63.25	
JOHNSON DWIGHT HARRIDANAS		386.32	
JOHNSON DWIGHT HARRIDANAS		46.00	
JOHNSON JEFFERY NELSON		55.56	
JOHNSON JEFFERY NELSON		126.62	
JOHNSON JEREMY SHANE		78.00	
JOHNSON SHEROD L		114.75	RET DEC
JOHNSON STEPHON LAMAR		112.69	
JOHNSON WALTER HARRELL		61.36	
JOLLEY TINA EIONE MARIE		466.43	
JONES CHANIKA TOWANDA		115.12	RET DEC
JONES CHARLES EDWARD		78.00	
JONES CHARLES EDWARD		151.35	

JONES CIERRA MONYAI		338.94	
JONES CIERRA MONYAI		33.64	
JONES COURTNEY LYNN		101.84	RET
JONES DERRICK STEVE ESTATE		83.91	
JONES EDDIE DEAN JR		1,640.87	
JONES EDDIE DEAN JR		15.19	
JONES JOHN THOMAS JR		483.81	
JONES LESLIE RAY		220.77	
JONES ROY LEE		115.00	RET DEC
JONES ROY LEE ESTATE		5.06	DEC
JONES TAIKEE SHANIQUE		414.03	
JONES TERRENCE DARNELL		11.61	
JONES VIRGINIA CARPENTER		224.17	
JONES VIRGINIA CARPENTER		206.00	
JORDAN BREONDA LATRICE		111.00	
JORDAN FELICIA YVETTE		83.74	
JORDAN LEE ANTHONY		67.50	
JORDAN LEE ANTHONY		116.74	
JORDAN LEE ANTHONY JR		78.00	
JORDAN LEE ANTHONY JR		17.25	
JORDAN PERNELL KEON		252.94	
JOYNER JACK JAMES JR		268.06	DEC RET
JOYNER JASON CHRISTOPHER	JOYNER KYRSTEN LEIGH	113.64	
JOYNER LINDA SUSAN		93.67	
JOYNER LINDA SUSAN		396.72	
JOYNER VICKY BRITT		23.00	
JOYNER VICKY BRITT		78.00	
JOYNER VICKY BRITT		23.00	
JOYNER VICKY BRITT		23.00	
JUSTICE SAMUEL AURELIUS		321.43	
JUSTICE SAMUEL AURELIUS		36.37	
JUSTICE SAMUEL AURELIUS		69.00	
JUSTICE SAMUEL AURELIUS		499.63	
JUSTICE SAMUEL AURELIUS		46.00	

JW&K ENTERPRISES		656.10		
K C APPLEWHITE INC		17.48		
KELLEY TISA KAREN		1,196.75		
KEMP JENNIFER RUTH		13.84		
KEMP JENNIFER RUTH	KEMP FRANCIS DALE	186.63		
KERBAUGH KEVIN CHARLES		44.47		
KEYS ASHLEY SHAVONNE	GAY BRIAN ANTHONY	410.21		
KEYS JONATHAN ANDREW		86.00		
KHAN BASIR SHADI JR		172.42		
KINDRED DEREK LEE		306.56		
KINDRED JOSEPH LINWOOD		122.61		
KINDRED MARQUITTA SHONTA		101.00		
KING TYMELE QUANJAE		165.34		
KING TYMELE QUANJAE		28.00		
KINLEY KENNETH RAY		168.00		
KISTNER ROSEMARIE MICHELLE		1,359.72		
KNIGHT BRITTANY BIRTHA		67.75		
KNIGHT CHRISTOPHER PAUL		217.31		
KUBIK SAMUEL JACOB	KUBIK TIMOTHY J	82.40		
LANCE GLENN MORRIS		288.51	DEC	RET
LANE CHRISTOPHER RUSSELL		137.70		
LANE DARRYL BEREDETTE JR		23.00		
LANE DIONJA UNIQUE		110.00		
LANE DIONJA UNIQUE		78.78		
LANGSTON ROBERT LEE		649.44		
LANGSTON ROBERT LEE		33.94	DEC	RET
LANKFORD KEISASHA CEIONDA		193.62		
LANKFORD SHAMETRICE SHANEL		55.34		
LANKFORD SHERESE	T/A SHERESE LANKFORD	56.25		
LANKFORD SHERESE KIARA		23.44		
LANKFORD TYREKE RASHAAD		197.06		
LASSITER ANITA FAYE		69.00		
LASSITER RAY		101.00		
LAUDONIO BENJIMIN JOHN		361.43		

LAWRENCE DEJONNAE MECHQUITA		63.80		
LAWRENCE DEJONNAE MECHQUITA	MCCLENDON SANDRA	473.67		
LAWRENCE DERRICK JAMES		85.89		
LAWRENCE MARVIN MCCOY		507.94	DEC	RET
LAWRENCE MOLLIE LEE		11.90	DEC	RET
LAWSON CIARA SHANTAE		403.55		
LAWSON DESHAN TOUMEKA	LAWSON-MALONE DANIELLE MONIQ	358.81		
LEAK GWENDOLYN WITHERSPOON		315.25	RET	DEC
LEAK GWENDOLYN WITHERSPOON		105.00	DEC	RET
LEAK GWENDOLYN WITHERSPOON		130.53	DEC	RET
LEASE RYAN DAVID		101.00		
LEE BEATRICE HOLLEY		34.88	DEC	
LEE KEESHA LATANYA		213.13	RET	
LEE KEESHA LATANYA		46.00	RET	
LEE LIZZIE LUCILLE		475.56		
LEGGETT COURTNIQUE N		281.67		
LETOURNEAU JOHN THOMAS	LETOURNEAU MELISSA SUE	23.00		
LEUCHNER CHRISTINE M		206.49		
LEUCHNER ERIC WILLIAM	LEUCHNER CHRISTINE M	138.00		
LEUCHNER ERIC WILLIAM		274.71		
LEUCHNER ERIC WILLIAM		67.50		
LEVERMANN-KELLY VICTORIA SCHAE		247.67		
LEWIS DEMETRIA ANN		193.85		
LIFE LINKS LLC		122.50		
LITTLE JESSICA MICHELLE		333.31	RET	
LITTLE OCTAVIUS M		11.80	RET	
LIVERMAN JOHN DAVID		173.56		
LIVINGSTON QUENTIN	T/A HERTIAGE SOLUTIONS	357.50		
LONG CURTIS LAWRENCE		23.00	DEC	RET
LONG CURTIS LAWRENCE		5.63	DEC	RET
LONG CURTIS LAWRENCE		389.00	RET	DEC
LONG QUANTRELL MONTE		212.69		
LONG TERRENCE ALPHONSA		138.00		
LOWE QUENTIN MALIK		310.66		

LOWE TYSHAUN ELIJAH		355.31	
LUDWICK JOHN ARTHUR		97.58	
LYNCH JOSEPH MCDONALD JR		147.00	
LYNCH JOSEPH MCDONALD JR		92.00	
M P HOLDINGS INC	T/A EXPRESS DELI	57.38	RET
M&M HAULING		131.25	
MACHADO ARANDA INGRID MHARYORI		525.04	
MACK ITURY COOPER		297.19	
SEABORN ANTWAN JERMAINE		71.77	
SEABORN ANTWAN JERMAINE		138.00	
MACKLIN JOSEPH LEE		147.00	DEC
MADDOX RUDY ISAIAH		147.87	
MAJETTE BEATRICE JONES		344.62	
MAJETTE FRANKLIN DELANO		135.00	
MAJETTE SIR WALTER		138.00	DEC RET
MALLORY JAMES ALEXANDER JR		23.00	
MALLORY JAMES ALEXANDER JR		121.03	
MALONE DIAMONDE SHANAE		144.80	
MALONE DONTE LAMONT		78.00	
MANLEY LATARSHA LYNETTE		108.28	
MANLEY LATARSHA LYNETTE		96.78	RET
MANLEY SATACHIA CHARLETTA		135.88	
MARSH RONALD LOREN		168.00	
MARTEL BRIAN PETER		707.36	
MARTENY-SENTERS JESSICA LYNN		46.26	
MARTIN WILLIAM NATHENAL		39.53	DEC RET
MARY H GARDNER REVOCABLE LIVNG	TRUST	178.06	RET
MARY H GARDNER REVOCABLE LIVNG	TRUST	46.00	RET
MASON HOWARD EARL		138.00	
MATTHEWS ALIKA YEVETT		24.63	
MATTHEWS ALIKA YEVETT		763.71	
MATTHEWS LAVAR DEVAN		384.84	
MATTHEWS LAVAR DEVAN		226.12	
MATTHEWS LAVAR DEVAN		1,498.10	

MATTHEWS LAVAR DEVAN	MURPHY LAMONT DEMETRIE	71.51
MATTHEWS LAVAR DEVAN		56.00
MATTHEWS LAVAR DEVAN		2,880.37
MATTHEWS LAVAR DEVAN		879.52
MATTHEWS LAVAR DEVAN		285.57
MCCASLIN JANELL MARYRUTH		732.43 RET
MCCLENNY DAVID LOGAN III		31.88 RET
MCKINLEY TONI DENISE		429.43 RET
MCKINLEY TONI DENISE		206.24 RET
MCKINNEY JAMES STEPHEN JR		317.89
MCKINNEY JAMES STEPHEN JR	MCKINNEY NATALIE CRANE	651.36
WARREN ALLISSIA KNIGHT		54.50
WARREN ALLISSIA KNIGHT		105.25
WARREN ALLISSIA KNIGHT		379.56
MCNEAR LATISHA RENEE		124.00
MCNEAR LATISHA RENEE		92.00
MCNEAR LATISHA RENEE		202.37
MCNEIL CHRISTOPHER XAVER		184.58
MEADES SONYA BLUNT		238.87
MENZIES INGRID		247.22
MERCED MARTIN		75.14
MERIWETHER IBRAHIM ZIAD		41.00
MEYERS CHRISTINA ALEXIS		66.94
MEYERS CHRISTINA ALEXIS		23.00
MIGGINS DORIS OPHILIA		115.00
MIGGINS KENNETH WAYNE		45.61
MIGGINS KENNETH WAYNE		343.99
MILES CINCHONA ELYSE		131.68
MILES VANEKA SHAUNTAL		23.00
MILIAN HENRY LEE		20.28
MILIAN ISAIAH O'NEAL		23.00
MILIAN ISAIAH O'NEAL		23.00
MILIAN ISAIAH O'NEAL		255.01
MILIAN ISAIAH O'NEAL	LEWIS SHENNA MARIE	55.00

MILIAN ISAIAH O'NEAL	LEWIS SHENNA MARIE	85.09
MILIAN JERELL LAMONT		223.00
MILIAN SHENNA MARIE		55.06
MILLER LORI ANN		223.63
MINNS GEORGE WINFIELD		166.86
MINNS GEORGE WINFIELD		138.00
MINOR RAYSHEL MARIE		310.80 RET
MITCHELL COREY LARNELL	JONES ELGINARD EDDIE	87.28
MITCHELL ERIK JAMES		158.00
MITCHELL ERIK JAMES		137.37
MITCHELL JOSEPH		138.52
MITCHELL LAKEETA LENETTE		285.38
MITCHELL LAKEETA LENETTE		13.59
MITCHELL LAKEETA LENETTE		111.50
MITCHELL MELKWANE REMONY		84.50
MITCHELL MELKWANE REMONY		99.60
MITCHELL MELKWANE REMONY		26.98
MJS ENTERPRISE TRUCKING LLC		349.20 RET
MJS ENTERPRISE TRUCKING LLC		601.88 RET
MJS ENTERPRISE TRUCKING LLC		261.00 RET
MJS ENTERPRISES INC		98.40 RET
MOBLEY JONATHAN CLARK		684.45 RET
MOBLEY JONATHAN CLARK		138.00 RET
MODERN OIL CORPORATION		533.84 RET
MONTAGUE DONALD LEMONT		138.00
MONTAGUE DONALD LEMONT		184.40
MOODY SOLOMON JERMY		273.28
MOODY SOLOMON JERMY		80.66
MOODY TROY DESHON		17.44
MOORE KENNETH HANDY		63.53
MORAN JACKIE RAY II		138.00
MORGAN LELAND DION		20.07
MORSE RYAN DANIEL		540.46
MORSE RYAN DANIEL		159.14

MORSE RYAN DANIEL		43.06	
MOSER PHILIP BELL III		69.62	DEC RET
MOSES KATINA LATRICE		242.25	
MOSES KATINA LATRICE		23.00	
MOSES KATINA LATRICE		486.43	
MOSES MARGARET CAROLYN		139.81	
MULHI ABDULGHANI AHMED		66.08	
MURPHY CECILEY DE'VON	C/O DONNA BOYKINS	14.58	
MURPHY FRED MARK		452.33	
MURPHY JOSHUA J		349.94	RET
MURPHY LAYFETTE		138.00	
MURPHY PHILLIP		191.00	
MURPHY PHILLIP		239.81	
MURPHY PHILLIP JEROME		138.00	
MURPHY PHILLIP JEROME		138.00	
MURPHY RODNEY ALAN		156.00	
MURPHY TERRENCE MAURICE		33.78	RET
MUTTER SHANNON CHRISTINE		162.87	
MYRICK SHELIA POPE		39.91	DEC
NANCE CHRISTOPHER JOHN		649.88	
NANCE CHRISTOPHER JOHN		343.00	
NANSEMOND SUFFOLK ORAL CARE 2		465.44	RET
NEWBY CLIFTON JARVEL		163.42	
NEWSOME MELVIN LEE JR		69.00	
NEWSOME MELVIN LEE JR		69.00	
NEWSOME MELVIN LEE JR		84.39	
NEWSOME QUR'AN SHAMARE		78.00	
NEWSOME QUR'AN SHAMARE		92.93	
NI XIAOLING	JIANG XIAN	1,591.62	
NI ZHOU QI		662.87	RET
NI ZHOU QI		512.97	
NIBLACK MICAH L		336.94	
NICHOLS JOHNETTA		378.44	
NICHOLS TAWANDA TENELLE		6.19	

NICHOLS TAWANDA TENELLE		691.93		
NICHOLS TAWANDA TENELLE		10.12		
NICHOLS TAWANDA TENELLE		23.00		
NLS EQUIPMENT LLC	DBA: NLS EQUIPMENT	7.88		
NORTHERN LEASING SYSTEMS INC	ATTN: TAX DEPT	14.13	RET	
OFFTERMATT GEORGIA MAE		21.37		
OLDS-TEACHEY CRAISHON DE'MERIUS		204.41	RET	
OLIVER JOHN PHILLIP		265.23		
OLIVER JOHN PHILLIP		850.50		
ONEAL MALIK MARKEIM		23.00		
ORTIZ-WOODS REBECCA LEE		171.41		
OUTLAW JERRY LEE		92.00	DEC	RET
OVERTON THURMAN LEE		22.36		
OWENS EVELYN MARIE		139.44		
OWENS HOWARD		69.00		
OWENS HOWARD		139.00		
PABLO MAURICIO PABLO		13.89		
PADGETT SHAWN LEE		127.23	RET	
PADGETT SHAWN LEE		542.56	RET	
PALLONE ROBERT SAMUEL		144.96		
PALMER JASON ROBERT ESTATE		3,134.07		
PAPE CRAIG D		56.13	RET	
PARKER ROBERT F JR		371.80	RET	DEC
PARRISH RICHARD DEAN		1,214.56		
PARRISH RICHARD DEAN		112.00		
PARRISH RICHARD DEAN		268.54		
PARSONS DALE JULIAN	C/O DOUGLAS PARSONS EXEC OF EST	42.61	DEC	
PAYNE BENJAMIN JEROME		168.00		
PAYNE FURNISHINGS	CHRISTOPHER BAGLEY	14.22		
PEARSON-SAWYER LISA DIONNE		313.57		
PERKINSON LAVONTE DONTTELL		101.00		
PERREE TRISTAN MICHAELS		24.56	RET	
PERRISH LA-SHONDA NICOLE	HARRIS EYLAISHA LYTRELL	234.37		
PERRY CATHERINE JOHNSON		78.00		

PERRY CHRISTINE POWELL	PERRY MATTHEW	304.56	
PERRY DAWAYNE ANTRON JR		23.00	
PERRY MATTHEW JR		69.00	DEC RET
PERRY MAURICE LAMONT		172.11	
PERRY RICHARD EARL		832.50	RET
PERRY RICHARD EARL		638.19	RET
PERSON BEATRICE DENNISE		23.00	
PERSON BEATRICE DENNISE		78.00	
PERSON CALVIN IVYE		215.12	
PERSON JURAD DAMON		23.00	
PERSON LAKEITHIA PATRICE		95.81	
PERSON LAKEITHIA PATRICE		46.00	
PERSONAL INTEGRITY LLC		28.09	
PESONEN DENISE ANNE		1,199.82	BKR
PHELPS DIANNE W	PHELPS PAUL ANDREW	114.12	
PHELPS DIANNE W		359.94	
PICOT JAMES JUNIOUS		162.81	
PICOT RODRICK JAMEL		23.00	
PICOT RODRICK JAMEL		101.00	
PICOT SHONDALYN JVONNE		7.68	GAR
PICOT SHONDALYN JVONNE		28.00	
PICOT SHONDALYN JVONNE		186.12	
PINKNEY DAVID JR		138.00	
PITTMAN ALETHA WANDA		138.00	
PITTS DONALD RAY	PITTS ROMONA HOPE	368.60	RET
POLK FRANCES JEAN		138.00	
POLLARD THELMA ELIZABETH		94.82	
POPE DORIS LEE		41.09	DEC
POPE DORIS LEE		16.40	DEC
POPE GREGORY LEON JR		60.26	
POPE GREGORY LEON JR		631.19	
POPE GREGORY LEON JR		82.57	
POPE JONATHAN LLOYD	POPE DAVID ALLEN	9.43	RET
POPE TYREL LETRON		70.22	RET

PORTER HOWARD DISHAN	54.06		
PORTER MADISON LILY	234.08		
PORTER MANUEL	115.00		
PORTER MANUEL	115.00	RET	DEC
PORTER MANUEL	115.00	RET	DEC
PORTER PERCELL JR	90.56		
PORTER PERCELL JR	195.00		
PORTER PERCELL JR	115.20		
POWELL 'ANIYA MARIE	173.00	BEC	
POWELL EDDIE DEAN	264.24		
POWELL EDDIE DEAN	69.00		
POWELL JULETTE	212.50		
POWELL MARILYN YVONNE	78.00		
POWELL PAUL PATTERSON	28.00		
POWELL PHILIP JR	23.00		
POWELL PHILIP JR	69.00		
POWELL PHILIP TRAVARIS	797.12		
POWELL RYAN DENEIL	40.57		
POWELL RYAN DENEIL	220.74		
POWELL STEVEN DWAYNE	21.94		
POWELL STEVEN DWAYNE	153.62		
POWELL TIFFANY SHANTAE	18.98		
POWELL TRAVIS DWAYNE	452.29	DEC	RET
POWELL TRAVIS DWAYNE	101.00	DEC	RET
POWELL VIOLA PERSON	203.73	RET	DEC
PREAU ROSS ALLAN	312.30		
PROVIDENCE PSYCHOLOGICAL	357.50		SERVICES INC
PUTMAN JONATHAN JAY JR	28.00		
RAGER CECIL WILLIAM JR	84.04		
RAGLAND MILDRED LOUISE	138.00		
RAMSEY ANGELA NICHOLE	665.57		
RAMSY DANA CAROL	5.32		
RATTA ROBERT LEWIS	313.03		
RAWLES LEROY JUNIOR	34.70		

RAWLS SHENITA VERONICA		10.21	
RAWLS TRAVIS LEE		296.50	
RAWLS TRAVIS LEE		6.50	
RAY GRACIE MARSH		153.88	DEC RET
RAY'S AUTO SALES AND RENTAL		27.00	RET
RAY'S AUTO SALES AND RENTAL		217.50	RET
REDDICK & SONS LAWN CARE		10.97	RET
REDDICK AND SONS LAWN CARE	SERVICES LLC	42.63	RET
REDDICK JESSICA BOLDEN		42.43	
REESE THOMAS LAMONT		59.23	
REEVES JAMES DORSEY		83.00	
REEVES JAMES DORSEY JR		105.95	
REID CAITLIN ANN		45.73	
REILLY SHANNON KIRSTEN		129.69	
RELIABLE TRASH SERVICE LLC	C/O RYAN TAX COMPLAINCE SERVICE	672.13	
RESNICK RACHEL		46.00	
REYES BARAONA LUIS ALFONSO		264.08	RET
RHODES MICHAEL GLADSTONE		78.00	RET
RICH MORGAN ELIZABETH		594.38	
RICHARDSON ARIELLE ALTAGRACIA		52.53	
RICHARDSON ISSAC		270.00	RET
RICHARDSON LUIS ALFRED		245.52	
RICHARDSON RONALD KEYUNTAE		116.62	
RICHARDSON RONALD KEYUNTAE		135.15	
RICHARDSON RONALD KEYUNTAE		5.49	
RICHARDSON RONALD KEYUNTAE		125.62	
RICHARDSON RONALD KEYUNTAE		48.75	
RICHMOND BERNELL WILLIAM		147.00	
RICHMOND BERNELL WILLIAM		23.00	
RICKS AUDREY MARIE		230.85	
RICKS AVRICK MONTRELL		78.00	
RICKS CIERA MARIE		57.62	
RICKS CIERA MARIE		52.53	
RICKS HARVIE LEO		105.39	DEC RET

RICKS KIM MARIE	101.00
RICKS LANEHYA KAMILE	30.75
RICKS MONISHA SHERAIN	143.71
RICKS RENEE MICHELLE	193.00 RET
RICKS RENEE MICHELLE	23.00 RET
RICKS RODRICK KIM	229.45
RICKS RODRICK KIM	138.00
RICKS RODRICK KIM	168.00
RICKS RODRICK KIM	23.00
RICKS RODRICK KIM	91.70
RICKS RODRICK KIM	139.46
RICKS SHAKEYTA LATOYA	70.75
RICKS SHAKEYTA LATOYA	124.00
RICKS SHAKEYTA LATOYA	48.10
RICKS TRAVIS LAMAR	168.47
RIDDICK GLADYS LEE	46.00 DEC
RIDDICK HAYWOOD JR	495.42
RIDDICK JAMES CALVIN	144.20
RIDDLE DEANA LEE	704.73
RILEY DERRICK LAMAR	87.78 RET
RJ'S AUTO PLUS	220.24
ROBERSON MARIA KAYLENE	12.82
ROBERSON MARIA KAYLENE	44.83
ROBERSON MARIA KAYLENE	58.15
ROBERTS ALISON KAY	107.09 RET
ROBERTS SELICIA BERNITA	90.26
ROBINSON BEYONCE LATAVIA	169.87
ROBINSON EARL LEE	23.00
ROBINSON EARL LEE	23.00
ROBINSON EARL LEE	65.40
ROBINSON EARL LEE	28.00
ROBINSON LORNA LOUISE	23.00
ROBINSON LORNA LOUISE	121.91
ROBLES MACARIO C	121.97

ROGERS KENNETH RAY	C/O MICHAELA ALWEYNSE	227.06
ROOKS BRENDA JOANNE		415.62 BEC
ROOKS WALLY CLARENCE		391.64
ROSA NELSON OMAR JR		91.51
ROSA NELSON OMAR JR		23.00
ROUSE KOURTNEY MARIE		100.05 RET
ROUSON DONNA KAY		248.00 RET
ROWE JOHN ALAN		124.00
RUFF MARK ALFRED		35.63 RET
RUFFIN VERNICIA LYNETTE		18.32 RET
RUSSELL JERROD NAJ'AZE		419.25
RUVIO EMANUEL ANTHONY		183.06 RET
SAFFELL MATTHEW AARON		119.40
SALEH NAGEEB ALI		19.68
SALMON ZACKERY SCOTT		356.46
SANDERS JOEL LAFAYETTE JR		73.28
SANDERS JOEL LAFAYETTE JU	RICKS ADA LEVONNE	454.91
SAPP ETHEL MAE CROCKER		116.40 DEC
SAUNDERS DAVONNA RENEE		173.53
SAUNDERS FREDIA MARIE		78.00
SAUNDERS JOHN PAUL JR		101.00
SAUNDERS JOHN PAUL JR		124.00
SAUNDERS JOHN PAUL JR		69.00
SAUNDERS STEPHANIE	T/A STEPHANIE'S BOUTIQUE	56.12 RET
SAUNDERS TAHIRA NEISHA		82.06 RET
SAUNDERS TAHIRA NEISHA		209.81 RET
SAUNDERS TASHELA AQUILA		217.73
SAVAGE CLAUDIA MAXINE		75.01
SAYAS ANTHONY JAMES JR		138.00
SCHARIN ANDREW GREGG JR		202.61
SCHFFE TRISHA G		1,470.85 RET
SCHILLING KARRIE LYNN		51.84
SCHLEY RICHARD KEVIN		633.97
SCOTT ALEASE VIRGINIA		23.00

SCOTT ALEASE VIRGINIA		179.81	DEC	
SCOTT CARL LEE		46.00		
SCOTT CARL LEE		76.00		
SCOTT CLAY ROBERT	SCOTT CATHERINE AMANDA	67.58		
SCOTT CLEO		149.31	RET	
SCOTT CLINTON B	BARBER SHOP	11.26		
SCOTT COREY ALLEN		232.50		
SCOTT EBONY MONIQUE		304.77		
SCOTT JERRY WAYNE		133.00	RET	
SCOTT JOHNNY LORENZO		168.27		
SCOTT JOHNNY LORENZO		68.69		
SCOTT JOHNNY LORENZO		77.75		
SCOTT KENDRA MICHELLE		42.33		
SCOTT LANNIE GARDNER		406.00		
SCOTT PATRICIA ANN		336.57		
SCOTT PATRICIA ANN		231.06		
SCOTT TY-IESHA DENISE		154.45		
SCOTT VICTOR LAMONT		310.04		
SCOTT VICTOR LAMONT		23.00		
SCOTT VICTOR LAMONT		53.00		
SCOTT VICTOR LAMONT		50.84		
SEABORN ANTWAN JERMAINE		117.34		
SEABORN SHANIKA RENEE		46.00		
SEABORNE DELORES YVONNE	C/O SHAMEKA JOHNSON (EXCUTOR)	23.00	DEC	RET
SEARS ALVIN EDWARD JR		255.40	RET	
SESSOMS RICHARD L		224.25		
SESSOMS RICHARD L		37.06		
SEXTON NEEL CHRISTIAN		83.00		
SEXTON NEEL CHRISTIAN		47.47		
SHARPE JAMES SIDNEY		205.97		
SHARPE SHIFFON JEANETTE	SYKES DEON DOMINICK	509.29		
SHARPE SHIFFON JEANETTE		65.12		
SHARPE SHIFFON JEANETTE		8.00		
SHARPE SHIFFON JEANETTE	SYKES DEON DOMINICK	274.50		

SHEA ROBERT EDGAR	SHEA ROSE MARIE ESTATE	73.06	
SHEARIN DONZELL DESHAUD		359.81	
SHEARIN DONZELL DESHAUD	SHEARIN KENNETH JR	23.00	
SHEEHY JOHN G		198.31	
SHEEHY JOHN G		138.47	
SHELLEY IRIS YOLANDA		46.00	RET
SHELLEY IRIS YOLANDA		738.31	RET
SHORT DANIEL ANDREW JR		82.86	
SHORT DANIEL ANDREW JR		568.00	
SIMONSEN JENNIFER JOHNSON	SIMONSEN DANIEL JAMES	23.00	
SIMPLY DISTRIBUTING INC		62.22	
SIMPLY HOME DESIGN AND EMBROIDERY		97.27	
SIMS WILLIAM PARMENTER JR		466.61	
SINGH JOHN CHANKA JR	RAMNARINE DENYSE	128.75	
SINGH JOHN CHANKA JR		69.55	
SINGH JOHN CHANKA JR		44.55	
SINGH JOHN CHANKA JR		13.84	
SIREECH HAILEY CECE		97.40	
SISSON GARY D		337.45	
SLEDGE NIKKI TEREL		276.62	
SLEDGE NIKKI TEREL		157.99	
SMALLWOOD MARCELLUS ANTWON		240.56	
SMITH AISHA SHANICE		71.94	
SMITH ANNA ODESTA		101.00	
SMITH ANNA ODESTA		128.13	
SMITH ANNA ODESTA		31.00	
SMITH CALVIN LEE		124.00	
SMITH CALVIN LEE		69.00	
SMITH CALVIN LEE		6.75	
SMITH CALVIN LEE		425.44	
SMITH CHARLIE MCKINDLY		270.87	DEC RET
SMITH DEVONDA		124.00	
SMITH DIMITRI D'ANDRE	WHITEHEAD PATRICIA SHONTREL	107.31	
SMITH DONALD		27.11	

SMITH JAH-LIL MALIK		113.02
SMITH KIM RENEE		428.63
SMITH LAVERNE DENISE		78.00
SMITH MYRON GUY		183.91
SMITH WILLIAM LUTHER JR		357.18
SNEAD WILLIAM HENRY		6.62 DEC
SOMMER TYLER JAMES		222.00
SOMMER TYLER JAMES		69.00
SOMMER TYLER JAMES		183.86
SONO PETRO INC	T/A PLAZA SUNOCO	1,237.50
SPAULDING PAUL RANDOLPH		126.20
SPENCE JOHN POOLE II		40.13 RET
SPIVEY APRIL RENEE		188.06
SPRUILL MARIA ELLENA		162.70
SPRUILL MARIA ELLENA		224.20
STACY DOLORES ANN		243.89
STATEN LORENZA		132.50
STATON NASHEEN	T/A QUALITY HOME ENHANCEMENT	245.00 RET
STATON NASHEN RONALD		642.88 RET
STATON NASHEN RONALD		46.43 RET
STEPHANY MATTHEW DAVID	EASON STACY N	1,180.33
STEPHENS ANTHONY WENDELL		55.00
STEPHENS ANTHONY WENDELL JR		279.27 RET
STEPHENS ANTHONY WENDELL JR		31.40 RET
STEPHENS CHARLES GILMER		140.00 RET
STEPHENS CHARLES GILMER		140.00 RET
STEPHENS TAMMY POPE	STEPHENS ANTHONY WENDELL	58.63
STEVENS MELVIN JUNIOR		354.32
STEWART AARON LEE		119.69
STEWART DEVON MACKEIS		87.12
STEWART ROBERT PHILLIP JR		220.22
STITH DONTE JOVELL	BOYD CHARITA DENISE	21.57
STOKES AL RAUEN		168.00 RET
STRATTON DANIEL JOSEPH		447.35

STREET BATRINA	351.57
STROMAN SCOTT ALEXANDER	78.00
STROTHERS RODNEY LAMONT	28.00
SUMLER CHARLES ANTHONY	46.00
SUMMERS SHANEEKA SHELBY	64.49
SUNOCO MART INC	77.25
SWAN MICHAEL EZELL JR	138.00
SWEAT JUDONALD AXUM	28.00 RET
SWEAT KELLI ELIZABETH	143.25
SWEAT KELLI ELIZABETH	214.19
SYKES CLAUDE RAYMOND JR	103.03
SYKES JACK TAYLOR JR	35.15
SYKES JACK TAYLOR JR	382.47
SYKES RANDY LEE JR	128.62
SYKES RAYMOND MCCOY	107.92
SYKES TINY	23.00
SYKES TINY	78.00
TANN AUDDREY WASHINGTON	186.50
TANN CHRISTOPHER WADE	163.01
TANNER DURAH HASHAH	124.00
TANNER DURAH HASHAH	92.62
TANNER DURAH HASHAH	110.50
TANNER SHAHEED ABDULLAH	46.00
TANWING DEVYN N	1,490.13
TATE DONALD WAYNE	23.00
TATEM DOUGLAS DONALD	195.99
TAYLOR CANDICE GLOVER	156.01
TAYLOR CANDICE GLOVER	23.00
TAYLOR ELLA SMITH	69.00
TAYLOR PHILBERT DELONE	65.83
TAYLOR SHARON ROSE	16.45
AGATE JASON MATTHEW	
TAYLOR SHARON ROSE	135.49
TAYLOR SHARON ROSE	108.09
TAYLOR VERNON CLAYTON	139.00

TAYLOR VERNON CLAYTON JR		45.41
TAYLOR VERNON CLAYTON JR		28.00
TEGL ANDREJ VIKTOR		23.00 DEC
TENCH LAWRENCE ASHBY		52.65
TERRELL KRISTL RENE		150.50
TERRELL KRISTL RENE		5.53
THOMAS CHRISTOPHER JAMES		275.43
THOMAS JANET EVA	THOMAS ROBERT LESLIE	32.74
THOMAS TREVIA DELARNDAVIA		46.00
THOMAS TREVIA DELARNDAVIA		115.73
THOMAS TREVIA DELARNDAVIA		23.00
THOMAS WAYNE ALLEN		357.50
THOMPASIONAS SARAH DENEEN		8.34
THOMPASIONAS SARAH DENEEN		268.40
THOMPSON ALBERT LEE		243.83
THOMPSON ANTONIO ERIC		28.00
THORNTON DORREEN SHARELL		138.00 RET
THORNTON LINDA FOSTER ESTATE		197.12
TILLERY DAVID CORNEL JR		17.42
TINY BLESSINGS DAYCARE CENTER INC		11.75
TOBIN DIANE DOUGHTY		30.93
TODD BRIDGET YOLANDA		144.17 RET
TORRANCE CHADWICK RODRIQUEZ		181.10
TRAYNHAM SARAH DENISE		412.22
TRIBBETT JAMES ALLEN	TRIBBETT SALLY FRANCIS	22.28
TRIBBETT JAMES ALLEN	TRIBBETT SALLY FRANCIS	467.98
TRINKETTES & TREASURES LLC	T/A PILTONS PALACE	31.92
TROTTER DALE DENNIS		24.47
TURNER ADDIE LORRINE		23.00
TURNER ANTHONY BRION		295.75
TURNER BENJAMIN JAMES		27.36
TURNER CLYDE RANDOLPH ESTATE		101.00
TURNER JAMES IVY		101.00
TURNER JENNIFER THERESA		130.81 RET

TURNER MARVIN MAURICE		68.76	RET	
TURNER SANDRA NEWSOME		13.50		
TURNER SANDY JOSEPH ESTATE		138.00		
TURNER SHIRLEY JEANETTE		42.44	DEC	
TURNER STEPHANEE MAREE		52.83		
TURNER STEPHANEE MAREE		101.00		
TYLER LETITIA SHANTA		90.44		
TYLER MICHAEL ANTHONY JR		78.00		
TYLER MIKEL BREONTE ¹		59.92		
UPLIFTING HANDS HOME HEALTH	CARE LLC	35.02		
URQUHART DAVID		8.10	DEC	RET
URQUHART LEE ANDREW		117.50		
URQUHART NELSON KING		28.00		
URQUHART SHARON ANITA		138.00		
USHER MICHAEL JOSEPH		138.00		
USHER STEVEN		69.00		
VAIL KRISTIE LETITIA		283.29		
VANCE COURTNEY DANIELLE	DECORMIER MERCEDES MICHELLE	7.45		
VANN STANLEY THOMAS JR		22.31		
VARGO JOHN CHARLES III		550.35		
VARGO JOHN CHARLES III		24.21		
VARGO JOHN CHARLES III		138.00		
VARGO JOHN CHARLES III		13.36		
VAUGHAN JOSEPH KELLEY SR		225.81	DEC	
VAUGHAN TREMAINE LAMONT		158.00		
VAUGHN DEBORAH HENDRICKS		19.98		
VAZQUEZ JUAN LOPEZ		130.97		
VELEZ JESSICA MARIE		158.00		
VIC'S SIGNS & ENGRAVING	& AUTO SALES	55.00		
VINCENT CALVIN CRIZZON		147.00		
VINCENT CHARLES OCTAVIUS		67.18	RET	
VINCENT CHARLES OCTAVIUS		23.00	RET	
VINCENT CHARLES OCTAVIUS		101.26	RET	
VINCENT CHARLES OCTAVIUS		197.50	RET	

VINCENT CHARLES OCTAVIUS		115.39	RET
VINCENT CONSTANCE CLEO		84.00	DEC
VINCENT NATHAN JR		474.97	
VINCENT RAYMON PAUL		83.00	
VINCENT RODNEY DASHAWN		23.00	
VITITOE DONALD LEE		13.50	
VOLKSWAGEN CREDIT LEASING LTD		2,030.05	
WALKER ERNEST		399.13	
WALKER MARTIN VINCENT		168.00	
WALKER MARTIN VINCENT		140.28	
WALKER OTIS THOMAS JR		225.85	
WALKER TAMARREA DEYON		193.00	
WALKER TAMARREA DEYON		138.00	
WALLOWER JOSEPH MARTIN		399.00	
WALTON IESHIA MONIQUE		170.81	RET
WARREN BRENDA MASON		207.87	
WARREN BRENDA MASON		18.75	
WARREN BRENDA MASON		391.06	
WARREN DAVID	SYKES TINY	585.74	
WARREN RODNEY LASHAAWN		23.00	
WARREN SHAVONTE LAVEENA		41.05	
WARREN TENIA ELAINE		191.00	
WARREN TENIA ELAINE		155.40	
WARREN TENIA ELAINE		139.00	
WARREN TENIA ELAINE		183.37	
WARREN TENIA ELAINE		77.22	
WARREN TIMOTHY LAMONT	WIGGINS TIERA SHONTA	94.75	
WARREN TYRONE		23.00	
WASHINGTON OMAR BYARIE		210.67	
WEATHERS SHIRLEY LOUISE REESE		78.00	
WEBB JEFFERY LEN		168.00	
WEBB JEFFERY LEN		338.95	
WELLINGTON CHARLES		281.25	
WELLINGTON CHARLES		56.00	

WELLINGTON CHARLES	109.96
WELLINGTON CHARLES	66.53
WELLINGTON CHARLES	115.00
WELLINGTON CHARLES	35.97
WELLINGTON CHARLES	81.79
WELLINGTON CHARLES	23.00
WELLINGTON CHARLES	160.23 INV
WELLINGTON CHARLES	143.19
WELLONS CORNESHA LA'SHUNDA	259.05
WELLONS WILMA DANYELL	37.44
WELLONS WILMA DANYELL	23.00
WELLS ASHLEY NICOLE	19.41
WELLS WALTER EDWARD	36.92
WHEELOCK ASHLEY RAYLEEN	76.56
WHITAKER ARLINDA JANE	69.00
WHITE BRIAN SHARARD	23.00
WHITE BRIAN SHARARD	23.00
WHITE BRIAN SHARARD	78.00
WHITE CANDICE RENEE	483.21
WHITE CAROL LEE	301.87
WHITE JACQULYN	226.12
WHITE JAMES LEE	46.00
WHITE RENITA LAWANDA	227.00
WHITEHEAD ALETHIA IRENE	188.12
WHITEHEAD BILLY REX JR	53.76 RET
WHITEHEAD HOWARD LEE JR	23.00
WHITEHEAD HOWARD LEE JR	23.00
WHITEHEAD HOWARD LEE JR	44.74
WHITEHEAD ISRAEL LAIMY	562.50
WHITEHEAD JOHN HAROLD	22.23
WHITEHEAD LARRY CURTISS JR	173.13
WHITEHEAD MICHAEL LEN	164.00
WHITEHEAD MICHAEL LEN	32.84
WHITEHEAD MIKAYLA TIARA	78.00

C/O BRENDA THOMAS

WHITEHEAD SARAH MARIE	7.65		
WHITLEY EUNICE IRENE	23.00	DEC	RET
WHITLEY EUNICE IRENE	23.00	DEC	RET
WICKLINE DAYSEL DONLEE III	109.00		
WIENKE CHRISTOPHER SHANE	108.98		
WIENKE CHRISTOPHER SHANE	157.97		
WIENKE CHRISTOPHER SHANE	80.81		
WIENKE CHRISTOPHER SHANE	62.28		
WIENKE CHRISTOPHER SHANE	10.31		
WIENKE STACY LYNN	285.55		
WIENKE STACY LYNN	126.62		
WIGGINS MICHAEL WAYNE SR	36.92		
WILKERSON DAVID LEE	170.81		
WILKERSON RASHAD JEROME	267.18		
WILKINS PEGGY LEE	48.31		
WILLIAMS ANDREA L	370.38		
WILLIAMS AURELIA LILLIE	74.75		
WILLIAMS DESHANNON MARIE	105.36		
WILLIAMS ELAINE DENISE	12.70		
WILLIAMS ELAINE DENISE	87.42		
WILLIAMS ELAINE DENISE	594.43		
WILLIAMS ERIC TYRELL	137.02		
WILLIAMS GEORGE OTTLEY HUSTON ESTAT	124.00	RET	DEC
WILLIAMS GRACE JOY	101.00		
WILLIAMS GRAVES SHALAIKA DESTINY	356.18		
WILLIAMS KIOKA NATASHA	272.51		
WILLIAMS LYNN PERCELL ESTATE	12.82		
WILLIAMS RAIFORD HARRISON	99.78		
WILLIAMS RAIFORD HARRISON	85.98		
WILLIAMS SHAYLA	230.78		
WILLIAMS TAMRA MAE	21.47		
WILLIAMS-BROWN SHANIQUE EVON	253.50		
WILLIAMS-BROWN SHANIQUE EVON	38.34		
WILLIAMS-BROWN SHANIQUE EVON	94.86		

WILLIS VALERIE VERNELL		71.19
WILSON FRANCES JOSEPHINE		119.50 RET
WILSON JAMES ARTHUR		39.78
WILSON JAMIE ANTWON		10.14
WILSON JAMIE ANTWON		261.77
WILSON JAMIE ANTWON		79.69
WILSON JONATHAN LEE		10.80 DEC
WILSON PHYLLIS	RAM CHANDROWTIE	20.81
WINBORNE WILLIAM WALLACE III		78.00 DEC
WINGFIELD CARLETTA DONITA		124.00
WOOD BENNIE ROBERT III		152.75 RET
WOOD DAVID LEE		11.22
WOODLEY AGNES DELOIS		69.00 DEC
WOODLEY JOERNI TA SHAWN		124.00
WOODWARD ROBERT JOHN	WOODWARD MELINDA HINSON	7.20
WOOTEN ELGIN JR	WOOTEN CHRISTINE POPE	102.07
WOOTEN ELGIN JR		275.31
WRENN ELIZABETH ANN STAGG		30.37
WRIGHT ADONIS JEVON		241.62
WRIGHT ARTHUR LEE JR		669.06
WRIGHT DONNEL		150.75
WRIGHT EDITH HUDSON		19.30
WRIGHT EDITH HUDSON		35.91
WRIGHT EDITH HUDSON		23.00
WRIGHT EDITH HUDSON		64.28
WRIGHT LINDA COPELAND		28.00
WRIGHT LOIS MARIE		675.13
WYCHE WILLIAM GRANT		69.00
ZIRKLE CHRISTOPHER ALLEN		38.47
Total		273158.32



December 05, 2022

To: Amanda C. Jarratt, City Manager
From: Dinah M. Babb, City Treasurer
Subject: Personal Property 2014-2015 Charge Off

Enclosed you will find a list of delinquent Personal Property for Tax Years 2014-2015 that are deemed uncollectable due to the statute of limitations in the Virginia State Code 58.1-3940. The statute of limitations restricts the office from actively placing any collections on these accounts. It is my recommendation that \$23,392.23 of delinquent personal property for tax years 2014-2015 be charged off.

Respectfully,

Dinah M. Babb, MGT
City Treasurer

Name	Name 2	Principal Balance	User Code 1	User Cod	User Code 3
AGATE JASON MATTHEW	AGATE WINNETTE MARIE	216.00	GAR	RET	
AGATE JASON MATTHEW	AGATE WINNETTE MARIE	11.81	GAR	RET	
AGATE JASON MATTHEW		34.24	RET		
AGATE WINNETTE MARIE	AGATE JASON MATTHEW	76.00			
AGATE WINNETTE MARIE		551.25	GAR	RET	
ALEXANDER CLARENCE KINCADE		27.50			
ANDERSON JESSICA ANN		60.46	RET		
ARGUETA CRUZ ALBERT ASAEL		48.00	RET		
ARKLAN JENNIFER ANN		175.89	RET		
ARREY-MBI AGNES E		65.52	RET		
ASHBURN SHAMEYRA RONNICE		27.85			
ATLANTIC DEMOLITION INC		3.60	RET		
AUSTIN SHELIA DIANE		56.86			
BAKER TERRANCE DAVONSKI		127.73	RET		
BANKS RAIMON		52.87	DEC	RET	
BARR NATHAN JR		95.84	DEC	RET	
BAZEMORE KWAMAINE RASHAD		23.00			
BEACHAM VERNON S JR		8.30	DEC	RET	
BELTER REBECCA MARIE		111.38			
BISHOP DONALD AR'KEEM		85.13	RET		
BISHOP DONALD AR'KEEM		102.48	RET		
BLIGEN-HALLBROOKS LORENE		15.06	RET		
BODDIE TIFFANY RENEE	BODDIE JAMES BURNELL	23.00			
COOLEY CAROLYN HOLLEY		72.61			
BOONE DARYL REGIS		23.00	RET		
BOONE DERRICK ASRIAH		242.71			
BOONE DONNIE RAY		54.90	RET	DEC	
BOONE FIESTA JEAN		72.11	DEC		
BOONE ROBERT		108.56			
BOONE SHAMIERE BERNARD		28.00			
BOOSE SHELLY ANTIONETTE		49.36	DEC	RET	
BOWE ALPHONZO FRANKLIN		4.50			
BRADSHAW ALESHA		88.58			

BRADSHAW ALESHA		47.84		
BRITT TRACY BERSHAW		19.66		
BRITT TRACY BERSHAW		23.00		
BROWN GARY		23.54	RET	
BROWN GARY		3.25	RET	
BROWN GARY		121.78	RET	
BROWN JOSEPH MCCOY		23.00		
BROWN JOSEPH MCCOY		113.11		
BULLOCK QUAMAR KASOHD		36.62		
BUMPUS BRIAN SCOTT		86.47		
BUSY LITTLE PEOPLE FAMILY HOME	CHILDCARE	39.69		
BYNUM BRANDON SHEROD		26.29		
BYNUM EDWARD BRADLEY		8.21		
BYNUM STEVE LARRY		23.00	DEC	RET
BYNUM STEVE LARRY		1.13	DEC	RET
BYNUM STEVE LARRY		23.00	DEC	RET
BYRUM TREE SERVICE		47.90		
CARINO ALEXANDER RUBEN		53.88	RET	
CHAVIS ROSE MARIA		64.01		
CHAVIS ROSE MARIA		51.35		
CLASSIC TOUCH MOBILE DETAILING		4.13	RET	
CLEMONS SHANICE GWENDOLYN		16.61		
CLINE DONALD RAYMOND		158.61	RET	
COBB OSCAR VANN		23.00	DEC	RET
COLLINS MARSHA LEE ALLEN		31.50	DEC	RET
COLSTON CHARLES RUBEN		23.00		
CONSTANTINE JENNIFER ANN		60.46		
COOPER KAREN PHELPS		18.12		
COOPER LARSHAREE DEREZ		18.73		
COOPER LARSHAREE DEREZ		88.75		
COPELAND DARRELL ANTONIO		40.47		
CRAMER SONJA TURNLEY ESTATE	HOLLEY SUNNI LAUREN	82.23		
DARDEN DOROTHY FREEMAN		43.76	DEC	RET
DAUGHTREY WANDA DANEKE		23.00		

DAVILA MARTHA F ESTATE		177.41 DEC	RET
DAWSON THOMAS RICHARD		31.85 DEC	RET
DAWSON THOMAS RICHARD		236.25 DEC	RET
DELOATCH JAMES THOMAS		23.00 DEC	RET
DENAM JAMES WILLIS		61.38	
DICKENS FLOYD MAURICE		429.75	
DICKENS FLOYD MAURICE		329.79	
DIXON ADONIS SHALON		23.00	
DOBSON DORREEN KEM		44.26 RET	
DORITY-SHANKLIN TRACI SHANNON		23.00	
DORSEY-ADOGA APRIL BROOKE		130.83	
DOUGLAS JAMAR MONTREL		23.00	
DUCK CHARLES ROBERT		7.88	
DUCK CHARLES ROBERT		23.00	
DUCK CHARLES ROBERT		5.63	
EATON KEITH JEROME		23.00	
EATON KEITH JEROME		23.00	
EATON KEITH JEROME		23.00	
EDWARDS RICKY DESHAUN		23.00	
EFS CREDIT TRUST		807.00	
ELDER LUTHER JR		72.90 DEC	
ELEY SHEMIKA KATRINA		23.00	
ELEY SHEMIKA KATRINA		23.00	
EVANS BRANDON MARQUI		4.94 RET	
EVANS JANET MARIE		43.51	
EVANS JULIS TYRONE		151.63	
EVANS JULIS TYRONE		15.04	
EVANS TREVORIS MONT'E	EVANS JULIS TYRONE	108.00 RET	
EVANS YVONNE	EVANS JULIS TYRONE	102.86 RET	
EVANS YVONNE	EVANS JULIS TYRONE	37.09 RET	GAR
FLEETWOOD SHAVON ALVITA		20.44	
FLESHMAN PETER JOHN		97.42 RET	
FLIPPO RICHARD C		28.00	
FLIPPO RICHARD C		49.87	

FLOOD APREAL RODONA	1.81		
FORD ADONIS LETROY	430.76	RET	
FORD MONICA CONTRICE	109.67		
FRANKLIN OUTREACH CHURCH	28.00	RET	
FREY NATHANIEL EUGENE	240.69		
FULLER CAROL ANN	187.97		
GAINNEY MARY JONES	74.92		
GALLOP RAY CECLEPHUS	9.62		
GARCIA CAITLYN CHRISTINE	58.44		
GARVIN SHAN'QUANTA SHAKIRA	23.00		
GATLING-SHAW RANITA RYSHAD	57.93		
GAY MICHAEL NATHANIEL	23.00		
GLOBAL ESTATES INVESTORS LLC	27.50		
GOODE EARL BILL	23.00	DEC	RET
GOODMAN WILLIAM	79.20		
GOODWYN RANDOLPH	19.46		
GOODWYN RANDOLPH	15.50		
GRAHAM APRIL CAMPBELL	55.91		
HAMRICK ASHLEY NICOLE	135.39		
HARGROVE YOLANDA	56.58	DEC	RET
HARGROVE YOLANDA	33.38	DEC	RET
HARPER CALVIN DELEWARE	318.65		
HARRIS EPPER WAYNE	59.96	RET	
HARRIS MELVIN MCCOY	56.25		
HARRIS RYAN WILLIAM	240.69		
HAYES LARRY LEE	23.00		
HAYES LARRY LEE	23.00		
HAYES LARRY LEE	23.00		
HEALTHY LIVING VARIETY STORE	4.60	RET	
HOFFMAN HEATHER ANISSA	97.18		
HOLLAND CONSTANCE ANISSA	75.77		
HOLLOWAY CURTIS LEE	28.00		
HOLLOWAY RUTH EDNA	28.16		
HOPKINS CURTIS LEON	42.92		

HOPPER MICHAEL DOUGLAS		66.03	RET	
HOWELL ELIZABETH ANN COX		23.00	RET	
HUDSON JASMINE RAIZELLE		16.67		
HUNT FRITZ WARDEL		23.00	DEC	RET
HUNT MAURICE TERRELL		6.00		
HUNTER SHACHIA DALPHONE SAMYRA		79.64		
JANNEY KENNETH PALMER		23.00		
JARRATT MICHAEL LEE		23.00		
JARRATT MICHAEL LEE		191.09		
JENKINS LOIS		23.00	RET	
JENKINS LOIS	JENKINS JAMES	66.15	RET	
JONES EDDIE DEAN JR		298.85		
JONES EDDIE DEAN JR		15.19		
JONES JOHN THOMAS JR		4.89	DEC	
JONES JOHN THOMAS JR		100.40		
JONES ROY LEE ESTATE		5.06	DEC	
JW&K ENTERPRISES		134.10		
KEMP JENNIFER RUTH		13.84		
KHAN BASIR SHADI JR		57.42		
KINLEY KENNETH RAY		28.00		
KISTNER ROSEMARIE MICHELLE		238.66		
LANE CHRISTOPHER RUSSELL		38.25		
LASSITER ANITA FAYE		23.00		
LAUDONIO BENJIMIN JOHN		51.65		
LAWRENCE MOLLIE LEE		11.90	DEC	RET
LEUCHNER CHRISTINE M		46.29		
LEUCHNER ERIC WILLIAM	LEUCHNER CHRISTINE M	23.00		
LEUCHNER ERIC WILLIAM		71.60		
LEUCHNER ERIC WILLIAM		11.25		
LONG TERRENCE ALPHONSA		23.00		
LYNCH JOSEPH MCDONALD JR		23.00		
LYNCH JOSEPH MCDONALD JR		23.00		
MACHADO ARANDA INGRID MHARYORI		65.53		
SEABORN ANTWAN JERMAINE		31.77		

SEABORN ANTWAN JERMAINE		23.00	
MAJETTE BEATRICE JONES		58.95	
MAJETTE FRANKLIN DELANO		22.50	
MAJETTE SIR WALTER		23.00	DEC RET
MALONE DONTE LAMONT		78.00	
MARSH RONALD LOREN		28.00	
MARTEL BRIAN PETER		147.54	
MASON HOWARD EARL		23.00	
MATTHEWS ALIKA YEVETT		24.63	
MATTHEWS ALIKA YEVETT		191.97	
MCKINNEY JAMES STEPHEN JR		65.52	
MCKINNEY JAMES STEPHEN JR	MCKINNEY NATALIE CRANE	128.75	
MEADES SONYA BLUNT		59.45	
MENZIES INGRID		63.50	
MILES LENNIE PASQUALE		0.27	GAR
MILIAN HENRY LEE		3.38	
MILIAN JERELL LAMONT		23.00	
MINNS GEORGE WINFIELD		51.86	
MINNS GEORGE WINFIELD		23.00	
MITCHELL COREY LARNELL	JONES ELGINARD EDDIE	87.28	
MITCHELL ERIK JAMES		43.00	
MITCHELL LAKEETA LENETTE		56.92	
MITCHELL LAKEETA LENETTE		13.59	
MOBLEY JONATHAN CLARK		157.66	RET
MOBLEY JONATHAN CLARK		23.00	RET
MONTAGUE DONALD LEMONT		23.00	
MONTAGUE DONALD LEMONT		46.39	
MORAN JACKIE RAY II		23.00	
MURPHY CECILEY DE'VON	C/O DONNA BOYKINS	14.58	
MURPHY LAYFETTE		23.00	
MURPHY PHILLIP		46.00	
MURPHY PHILLIP		124.81	
MURPHY PHILLIP JEROME		23.00	
MURPHY PHILLIP JEROME		23.00	

MURPHY TERENCE MAURICE	5.63	RET	
MYRICK SHELIA POPE	39.91	DEC	
OLIVER JOHN PHILLIP	183.42		
OLIVER JOHN PHILLIP	141.75		
ORTIZ-WOODS REBECCA LEE	56.41		
PABLO MAURICIO PABLO	13.89		
PALMER JASON ROBERT ESTATE	587.13		
PARKER ROBERT F JR	74.13	RET	DEC
PAYNE BENJAMIN JEROME	28.00		
PERREE TRISTAN MICHAELS	24.56	RET	
PERRY MATTHEW JR	23.00	DEC	RET
PERRY RICHARD EARL	596.25	RET	
PERRY RICHARD EARL	166.97	RET	
PICOT SHONDALYN JVONNE	7.68	GAR	
PICOT SHONDALYN JVONNE	28.00		
PINKNEY DAVID JR	23.00		
PITTMAN ALETHA WANDA	23.00		
POLK FRANCES JEAN	23.00		
POWELL PAUL PATTERSON	28.00		
POWELL TRAVIS DWAYNE	282.82	DEC	RET
RAGLAND MILDRED LOUISE	23.00		
RAMSEY ANGELA NICHOLE	132.86		
RAMSY DANA CAROL	5.32		
REESE THOMAS LAMONT	59.23		
REID CAITLIN ANN	18.96		
REYES BARAONA LUIS ALFONSO	61.98	RET	
RICHARDSON ISSAC	45.00	RET	
RICHARDSON LUIS ALFRED	59.96		
RICKS MONISHA SHERAIN	1.71		
RICKS RENEE MICHELLE	23.00	RET	
RICKS RENEE MICHELLE	23.00	RET	
RICKS RODRICK KIM	59.45		
RICKS RODRICK KIM	23.00		
RICKS RODRICK KIM	28.00		

RICKS RODRICK KIM		23.00	
RIDDLE DEANA LEE		146.52	
RILEY DERRICK LAMAR		87.78	RET
ROBERSON MARIA KAYLENE		12.82	
ROBERSON MARIA KAYLENE		4.39	
ROBERSON MARIA KAYLENE		44.83	
ROBERTS SELICIA BERNITA		44.26	
ROUSE KOURTNEY MARIE		83.99	RET
ROUSON DONNA KAY		23.00	RET
RUFF MARK ALFRED		11.87	RET
RUVIO EMANUEL ANTHONY		68.06	RET
SAYAS ANTHONY JAMES JR		23.00	
SCHARIN ANDREW GREGG JR		202.61	
SCOTT CARL LEE		23.00	
SCOTT CARL LEE		23.00	
SCOTT CLAY ROBERT	SCOTT CATHERINE AMANDA	67.58	
SCOTT EBONY MONIQUE		60.97	
SHEA ROBERT EDGAR	SHEA ROSE MARIE ESTATE	73.06	
SHELLEY IRIS YOLANDA		23.00	RET
SHELLEY IRIS YOLANDA		313.52	RET
SIMMONS NELLIE MAE		0.07	
SINGH JOHN CHANKA JR	RAMNARINE DENYSE	128.75	
SINGH JOHN CHANKA JR		69.55	
SINGH JOHN CHANKA JR		44.55	
SINGH JOHN CHANKA JR		13.84	
SMITH CHARLIE MCKINDLY		66.03	DEC RET
SMITH KIM RENEE		119.70	
SMITH MYRON GUY		96.85	
SNEAD WILLIAM HENRY		6.62	DEC
SONO PETRO INC	T/A PLAZA SUNOCO	1,237.50	
STACY DOLORES ANN		51.86	
STEVENS MELVIN JUNIOR		155.13	
STEWART ROBERT PHILLIP JR		220.22	
STOKES AL RAUEN		28.00	RET

STORY SUSAN SCOTT		1.76	
SUNOCO MART INC		77.25	
SWAN MICHAEL EZELL JR		23.00	
SYKES JACK TAYLOR JR		35.15	
SYKES JACK TAYLOR JR		67.42	
TANN CHRISTOPHER WADE		100.46	
TATE DONALD WAYNE		23.00	
TAYLOR SHARON ROSE	AGATE JASON MATTHEW	16.45	
TAYLOR SHARON ROSE		39.45	
TAYLOR SHARON ROSE		72.99	
TEGL ANDREJ VIKTOR		23.00	DEC
THOMAS JANET EVA		4.22	DEC
THOMAS JANET EVA	THOMAS ROBERT LESLIE	32.74	
THOMPSON ALBERT LEE		243.83	
THORNTON DORREEN SHARELL		23.00	RET
TRAYNHAM SARAH DENISE		72.05	
TRIBBETT JAMES ALLEN	TRIBBETT SALLY FRANCIS	22.28	
TRIBBETT JAMES ALLEN	TRIBBETT SALLY FRANCIS	173.36	
TROTTER DALE DENNIS		24.47	
TURNER SANDRA NEWSOME		13.50	
TURNER SANDY JOSEPH ESTATE		23.00	
TURNER SHIRLEY JEANETTE		23.00	DEC
URQUHART DAVID		1.35	DEC RET
URQUHART SHARON ANITA		23.00	
USHER MICHAEL JOSEPH		23.00	
VARGO JOHN CHARLES III		78.66	
VARGO JOHN CHARLES III		24.21	
VARGO JOHN CHARLES III		23.00	
VAUGHAN TREMAINE LAMONT		23.00	
VINCENT CHARLES OCTAVIUS		67.18	RET
VINCENT CONSTANCE CLEO		28.00	DEC
VINCENT NATHAN JR		83.18	
WALKER ERNEST		74.57	
WALKER MARTIN VINCENT		28.00	

WALKER MARTIN VINCENT	23.38		
WALKER OTIS THOMAS JR	55.85		
WALKER TAMARREA DEYON	23.00		
WALKER TAMARREA DEYON	23.00		
WARREN TENIA ELAINE	46.00		
WASHINGTON OMAR BYARIE	210.67		
WEBB JEFFERY LEN	28.00		
WEBB JEFFERY LEN	73.56		
WHITE CANDICE RENEE	105.01		
WHITEHEAD BILLY REX JR	8.96	RET	
WHITEHEAD MICHAEL LEN	164.00		
WHITLEY EUNICE IRENE	23.00	DEC	RET
WHITLEY EUNICE IRENE	23.00	DEC	RET
WILKINS RACHEAL MARIE	3.21		
WILKINS RACHEAL MARIE	2.30		
WILLIAMS ANDREA L	80.15		
WILLIAMS ERIC TYRELL	22.02		
WILLIAMS KIOKA NATASHA	61.41		
WILLIAMS LYNN PERCELL ESTATE	12.82		
WILLIAMS RAIFORD HARRISON	16.63		
WILLIAMS RAIFORD HARRISON	14.33		
WILLIAMS SHAYLA	57.42		
WILSON JAMES ARTHUR	3.38		
WILSON JONATHAN LEE	10.80	DEC	
WOOD DAVID LEE	11.22		
WRIGHT ARTHUR LEE JR	152.03		
WRIGHT LOIS MARIE	145.51		
ZIRKLE CHRISTOPHER ALLEN	38.47		
Total	23,392.23		



*Office of the City Manager
Amanda C. Jarratt*

December 6, 2022

To: Franklin City Council

From: Amanda C. Jarratt, City Manager

Reference: Time Capsule Request

Background Information

Please see the attached request from Gaynelle Riddick regarding a time capsule that was placed in Memorial Park in 1976 during the Centennial Celebration in the City of Franklin. The time capsule at this time is not scheduled to be opened until 2076 however, the request is to open the capsule in 2026. This was discussed in August of 2021 and no action was taken at that time.

Needed Action

Provide direction to staff.

July 14, 2021

To: Franklin City Council

From: Gaynelle Riddick

In 1976 during the Centennial celebration in the City of Franklin, we, the Centennial Committee, planted a time capsule in the city park on Clay Street and Meadow Lane. Every organization in the city was invited to place a letter in the capsule. Mementos of the time in which we were living were chosen by the committee and placed in the capsule prior to the presentation of the letters. I spent many hours and made many phone calls and other contacts to make sure that every organization, business, church, civic club, etc. was included and a representative from each was in attendance that afternoon to place their letter in the capsule. The Franklin High School band performed and the park was filled with folks who made a special effort to witness this much-publicized event.

It was the Centennial Committee's decision to declare that the capsule would be opened one hundred years later at the bicentennial celebration of our city. Realizing that many of our citizens today who were here for the planting of the capsule and will remember that event, I would like for the City Council to amend our order made in 1976. I would like to have it opened on its fiftieth anniversary in 2026. It would be appropriate then to refill the capsule with items that will tell the story of our city and its citizens at that time. The capsule was constructed by workers at Union-Camp Corporation and proudly presented to the committee. We, in turn, presented it to the city workers who prepared the deep hole in the park where it was buried. At the conclusion of the ceremony that March afternoon in 1976, those city workers sealed the steel box and covered it with a plaque which reads that it is to be opened in 2076. I hope you will honor my request for a fifty-year earlier date!

At age 86, I am the only living member of that Centennial Committee. I request that you plan a proper unveiling of that time capsule in March of 2026 for an interesting moment in our city's history. I am confident that my former committee members would be in agreement with this request. I know there are folks who have pictures from that day. Certainly there are a goodly number of citizens who were present for that event and can remember it well. Perhaps they can share their memories in the local newspaper or on Facebook or whatever means of communication we might have in a few more years. What an interesting day that will be and what interesting things you will find in that steel box planted in the park. Oh, how I would love to be there!

A handwritten signature in black ink that reads "Gaynelle E. Riddick". The signature is written in a cursive style with a long horizontal flourish extending to the left.



*Office of the City Manager
Amanda C. Jarratt*

December 6, 2022

To: Franklin City Council

From: Amanda C. Jarratt, City Manager

Reference: City Manager's Report

General Updates

- Staff continues to work on the various capital projects approved by City Council.
- Staff continues to work with DHCD and Summit Engineering on the Laurel Street CDBG Grant. Client intake and income verifications have begun.
- Staff continues to work with Michael Baker and the Department of Rail and Public Transit to get feedback from the public on potential fixed route transit options in the City.
- Staff continues to meet with regional partners to discuss next steps on the regional radio system as well as violence and crime prevention.
- City Office's will be closed on Friday December 23, 2022 and Monday December 26, 2022 in observance of the Christmas holiday. City Office's will also be closed on Monday January 2, 2023 in observance of the New Year's holiday.
- Attached are three conceptual alternatives for Hunterdale Road along with the pros and cons for each one. Due to the significant cost and financial impact to the City staff needs direction on how to proceed.

Community Events

- Light Up the Night Holiday Tree- Friday, Saturday, Sunday in December

Hunterdale Road/Delaware Road Pros and Cons for Alternatives

Alternative 1

- Alternative 1 proposes roundabouts for traffic control at **both** the Hunterdale Road/Country Club intersection **as well as** the Hunterdale Road/Delaware Road intersection.

Alternative 1 Pros

- Improves access management along Delaware Road
- Roundabout/innovative intersection design reduces the number of conflict points at the Hunterdale Road/Delaware Road intersection
 - o Enhances operational safety through the two intersections
- Roundabout at the Hunterdale Road/Country Club intersection will provide additional traffic calming measure for northbound/southbound traffic traveling through the intersection (particularly traffic approaching the area from the north)

Alternative 1 Cons

- Longer construction period/schedule
- Highest cost of the three alternatives
- Detour route alternatives relatively longer and more circuitous to accommodate construction of roundabout at the Hunterdale Road/Country Club Road intersection
 - o Detours will be required and primarily result in the need to route traffic through surrounding residential neighborhoods.
- Additional Right-of-Way (ROW) acquisition and/or easements necessary with improving the Hunterdale Road/Country Club Road intersection
- ROW impacts to Car Wash, Shell, and Hunterdale Home and Garden Materials Lot
 - o Current configuration would eliminate 2 of 6 shell gas pump bays
- Temporary construction impacts to all parcels within project area
- Extended period of impacts to businesses in the vicinity of both intersections due to longer construction duration
- Requires relocation and construction of new access driveway to/from Hunterdale Home and Garden Center materials (e.g., rock, gravel, firewood, pumpkins, etc.) lot along the east side of Hunterdale Road

Alternative 2

- Alternative 1 proposes a roundabout for traffic control at **just** the Hunterdale Road/Delaware Road intersection and would maintain current traffic operations/control at the Hunterdale Road/Country Club intersection.

Alternative 2 Pros

- Improves access management along Delaware Road
- Roundabout/innovative intersection design reduces the number of conflict points at the Hunterdale Road/Delaware Road intersection
 - o Enhances operational safety through the two intersections
- Less expensive than Alternative 1

- Less impact to local businesses
- Shorter construction duration than Alternative 1 but slightly longer or about the same as Alternative 3
- Maintains traffic control (STOP control) and known traffic operations at the Hunterdale Road/Country Club Road intersection

Alternative 2 Cons

- ROW impacts to Car Wash, Shell, and Home and Garden Materials Lot
 - o Current configuration would eliminate 2 of 6 shell gas pump bays
- Temporary construction impacts to all parcels within project area
- Detours will still be required and primarily result in the need to route traffic through residential neighborhoods.
- Doesn't present/provide a traffic calming measure for traffic entering/exiting the area through the Hunterdale Road/Country Club Road intersection

Alternative 3

- Difference between Alternative 3 and the first two Alternatives is there is no roundabout proposed for traffic control at either intersection. Primarily implements raised medians/islands to better define travel lanes, access point, and intersection operations.

Alternative 3 Pros

- Least expensive of the three alternatives
- Shorter construction period/schedule
- Enhances traffic control as well as general traffic operations and safety at the Hunterdale Road/Delaware Road intersection
- Least amount of ROW impacts and less significant impacts to surrounding area properties/businesses
- Provides better access management along Delaware Road
- Does not eliminate any parking from the Church Parcel

Alternative 3 Cons

- Increased number of potential conflict points compared to Alternative 1 and Alternative 2
- Sustained number of movement options and/or slightly newer/different traffic control measures may continue to lead to driver confusion
- Truck left turns out of Shell southern driveway toward northbound Hunterdale Road could be problematic without larger/softer radius
 - o Could increase Truck queuing at this intersection which could periodically cause upstream blocking
- Temporary construction impacts to all parcels within project area but less than Alternative 1 and Alternative 2.

Programming/Planning Level Opinion of Probable Construction Cost Estimates (2022 Dollars)

Alternative 1 - \$5,400,000

Alternative 2 - \$4,300,000

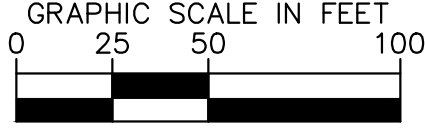
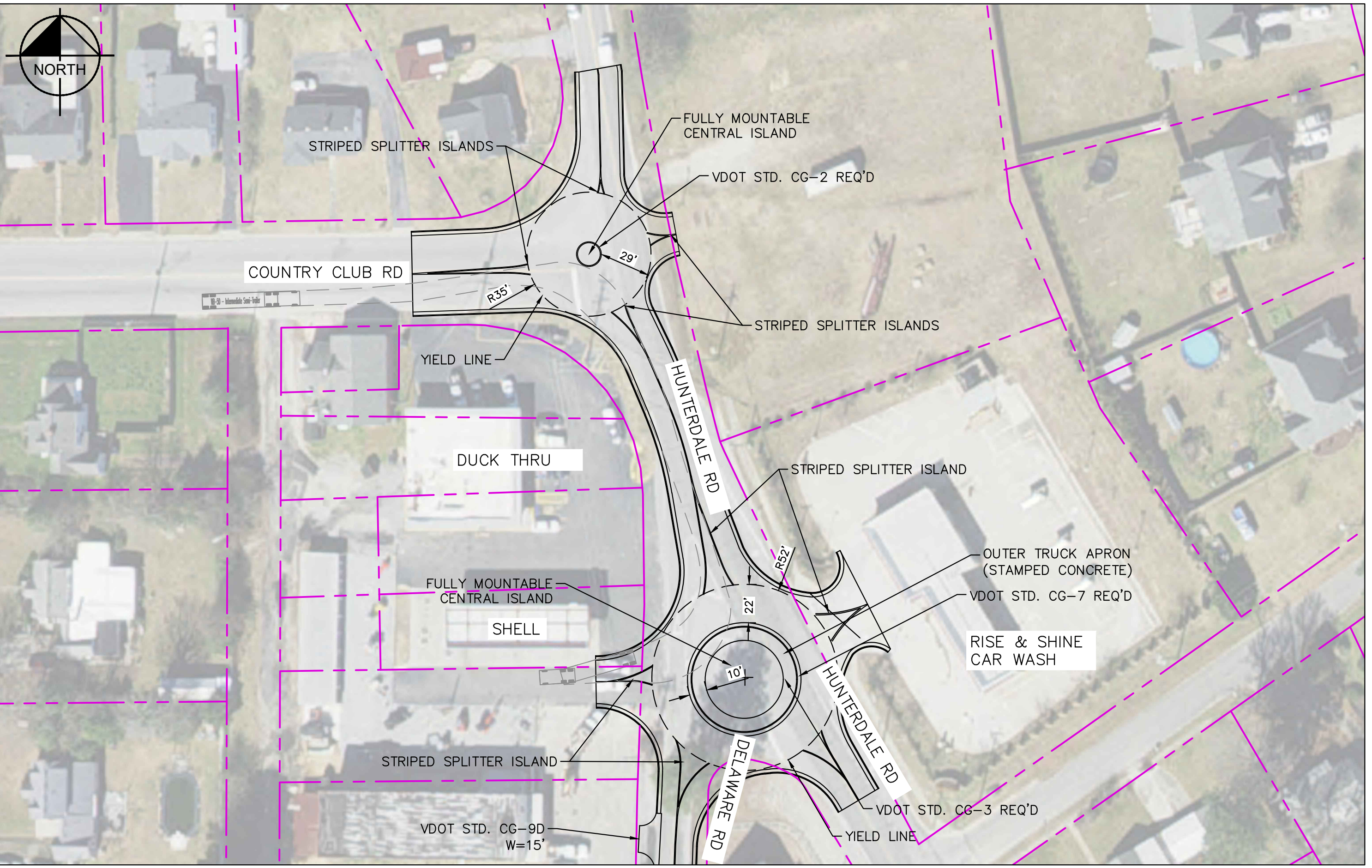
Alternative 3 - \$3,600,000

Programming/Planning Level Cost Estimates consists of:

- 1) Preliminary Engineering
- 2) Construction
- 3) Right-of-Way

**The Consultant has no control over the cost of labor, materials, equipment, or over the Contractor's methods of determining prices or over competitive bidding or market conditions. Opinions of probable costs provided herein are based on the information known to the Consultant at this time and represent only the Consultant's judgment as a design professional familiar with the construction industry. The Consultant cannot and does not guarantee that proposals, bids, or actual construction costs will not vary from its opinions of probable costs.

This document, together with the concepts and designs presented herein, is intended only for the specific purpose and client for which it was prepared. Reuse of and improper reliance on this document without written authorization and adaptation by Kimley-Horn and Associates, Inc. shall be without liability to Kimley-Horn and Associates, Inc.

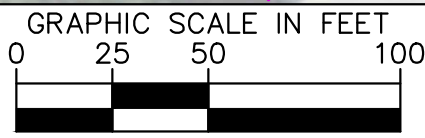
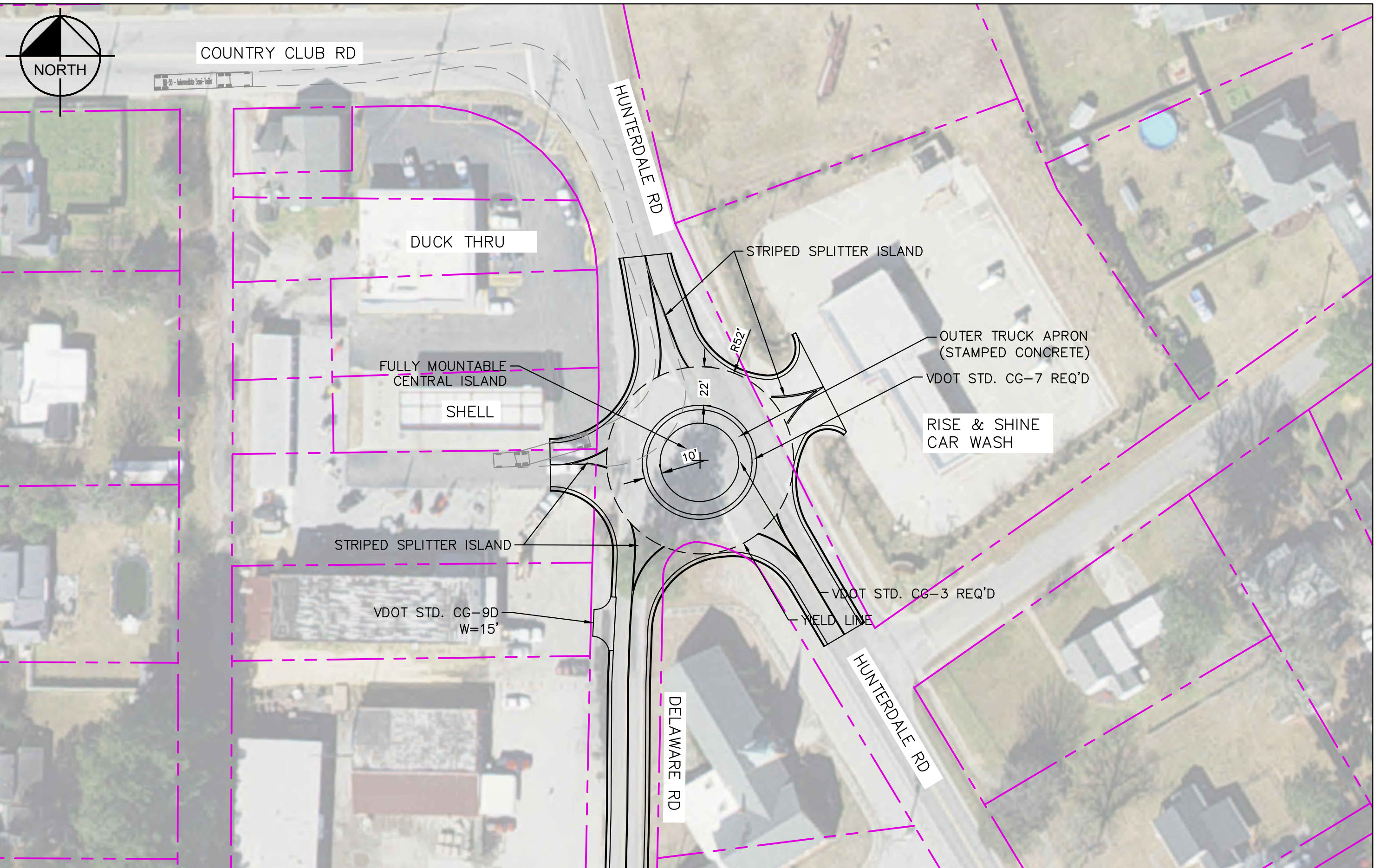


HUNTERDALE AND DELAWARE INTERSECTION ALTERNATIVES ANALYSIS

ALTERNATIVE 1

11/14/2022

This document, together with the concepts and designs presented herein, is intended only for the specific purpose and client for which it was prepared. Reuse of and improper reliance on this document without written authorization and adaptation by Kimley-Horn and Associates, Inc. shall be without liability to Kimley-Horn and Associates, Inc.



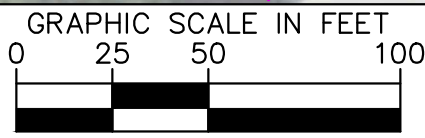
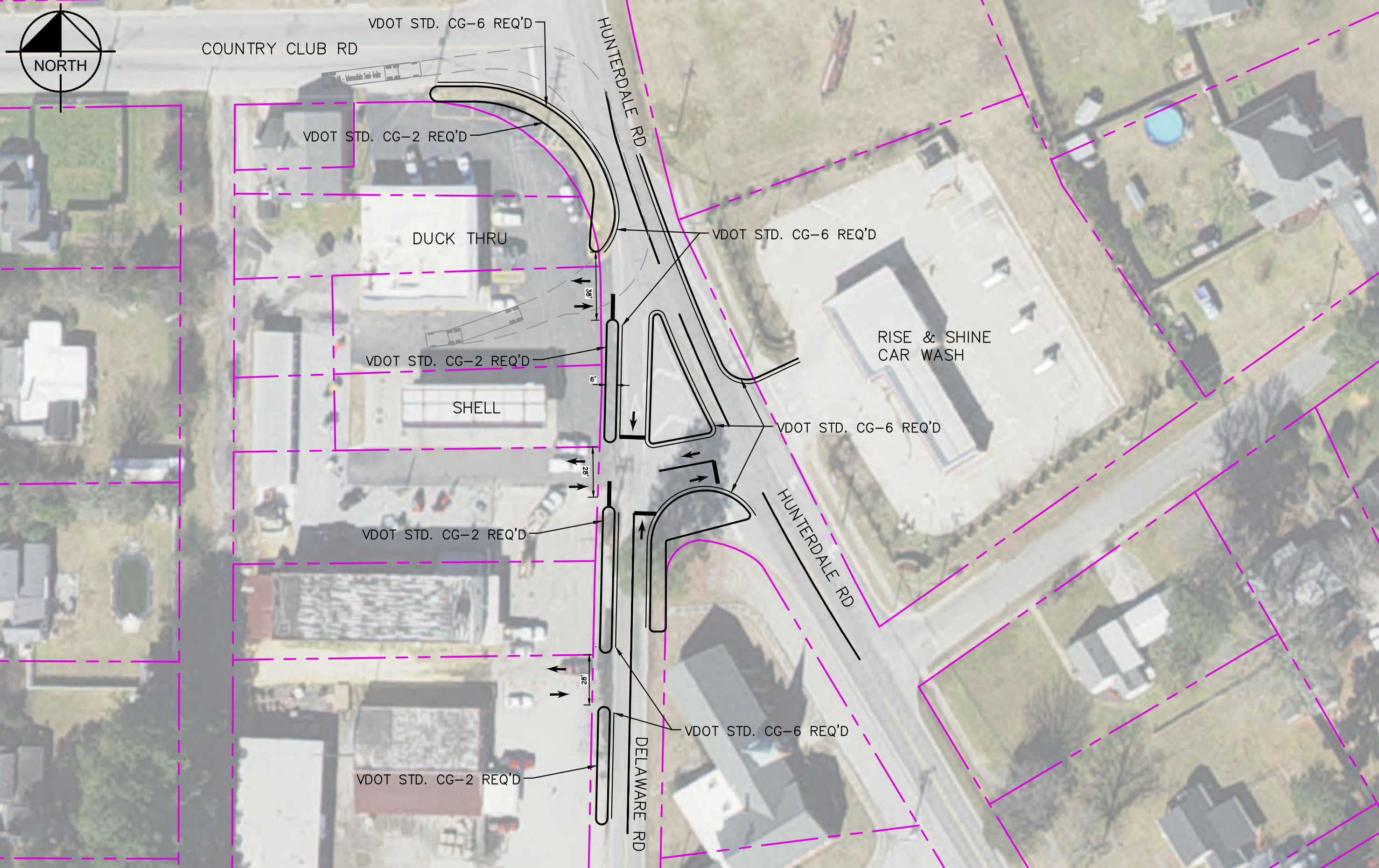
HUNTERDALE AND DELAWARE INTERSECTION ALTERNATIVES ANALYSIS

ALTERNATIVE 2

11/14/2022



This document, together with the concepts and designs presented herein, is intended only for the specific purpose and client for which it was prepared. Reuse of and improper reliance on this document without written authorization and adaptation by Kimley-Horn and Associates, Inc. shall be without liability to Kimley-Horn and Associates, Inc.



HUNTERDALE AND DELAWARE
INTERSECTION ALTERNATIVES ANALYSIS

ALTERNATIVE 3

11/17/2022

